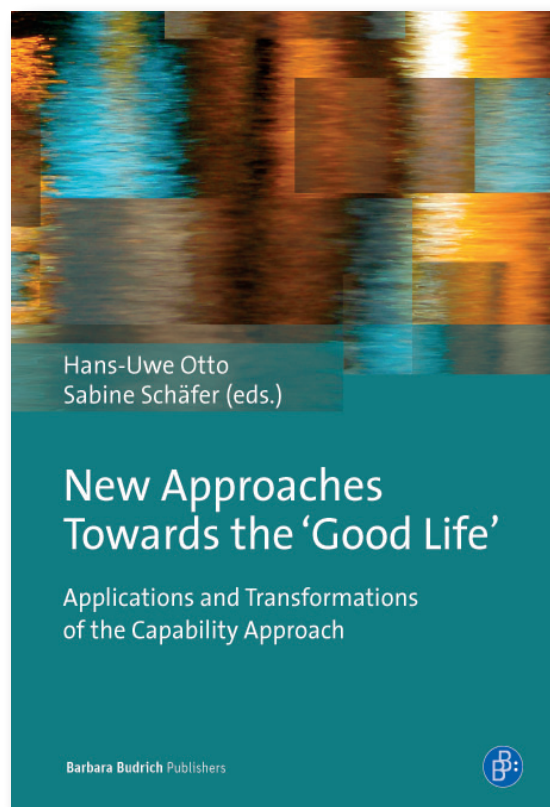


# Capability Approach



Hans-Uwe Otto  
Sabine Schäfer (eds.)

## New Approaches Towards the 'Good Life'

Applications and Transformations  
of the Capability Approach

2014. 175 pp.  
26,00 € (D), 26,80 € (A)  
US\$45.95, GBP 26.95  
ISBN 978-3-8474-0157-5

**The Capability Approach founded by Armatya Sen and Martha Nussbaum offers a justice-based analytical framework for human development. The contributions to the present volume show how the Capability Approach can be applied productively in empirical analyses of the life situations of young people and the educational institutions they attend in different parts of the world including Serbia, Kosovo, Kenya, India, Greece, and Germany.**

Moreover, the volume helps to extend the Capability Approach by relating it to different theoretical and methodological approaches such as the capability concept of Paul Ricoeur, critical materialism, critical discourse analysis, and biographical research. Thus, the volume delivers comprehensive insights into the social (in) justices to be found not only on the level of individual life paths but also in institutions and in educational policy while showing innovative ways of applying the Capability Approach in the social sciences.

### Editors:

Prof. Dr. Hans-Uwe Otto, Bielefeld University

Dr. Sabine Schäfer, Bielefeld University



[www.budrich-verlag.de](http://www.budrich-verlag.de)

eBook: 978-3-86649-0466-8