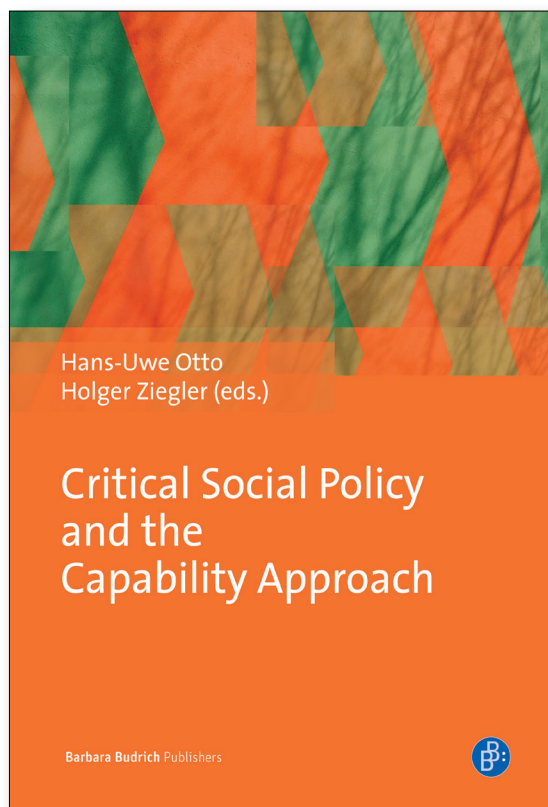


New Perspectives on social policy



Hans-Uwe Otto
Holger Ziegler (eds.)

Critical Social Policy and the Capability Approach

2014. 255 pp. Hardcover.
53,00 € (D), 54,50 € (A),
GBP 47.95, US\$79.95
ISBN 978-3-8474-0611-2

The (European) welfare state as well as the political space of “the social” is currently being re-organised in a fundamental way. This has major implications for any attempt to contribute to a more just or even emancipatory way of shaping “the social”. The authors discuss what the Capabilities Approach (CA) may contribute to this attempt. Rather than assessing the philosophical foundation of this approach, “Shaping the Social” critically discusses the potentials and pitfalls of analysing social and labour-market policy and in particular social services from a capabilities perspective.

Editors:

Prof. Dr. Dr. h.c. mult. Hans-Uwe Otto

Prof. Dr. Holger Ziegler

both: Bielefeld University, Germany



www.budrich-verlag.de

Available as eBook: 978-3-8474-0294-7