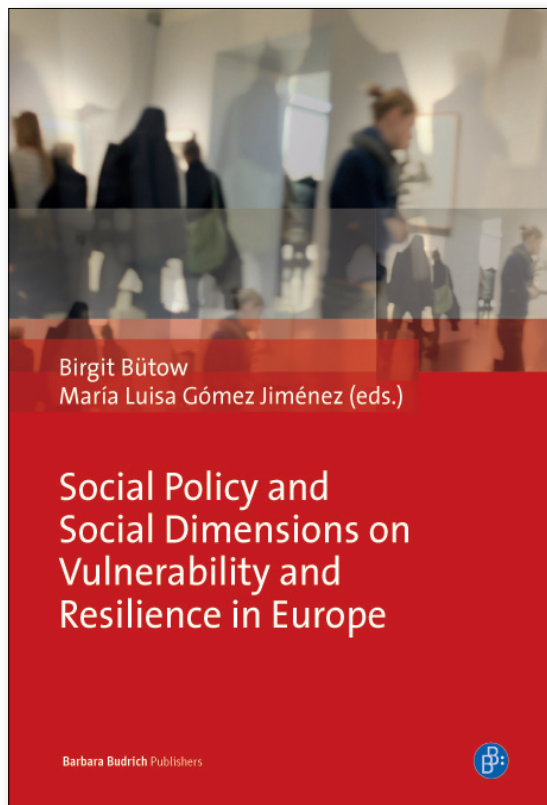


Vulnerability and Resilience



Birgit Bütow
María Luisa Gómez Jiménez (eds.)

Social Policy and Social Dimensions on Vulnerability and Resilience in Europe

2015. 167 pp. Pb.
29,90 € (D), 30,80 € (A),
US\$45.95, GBP 26.95
ISBN 978-3-86649-363-6

The book you have in your hands describes from an interdisciplinary and European perspective the social dimensions of vulnerability and resilience. The case comes under the framework of the current public discussions on the topic. Thus, on one hand social problems are supposed to have its causes in individuals, and therefore are not a consequence of the socio-economic inequality. Consequently we find in Europe an increasing policy of self-activation and self-help as substitutes for social work. On the other hand new types of social vulnerabilities arise, giving the floor to new challenges for social work and social policy.

The editors:

Prof. Dr. Birgit Bütow,
Department for education sciences,
University of Salzburg, Austria

Prof. Dr. María Luisa Gómez Jiménez,
Facultad de Derecho, Universidad de Málaga,
Spain



www.budrich-verlag.de

Auch als eBook: 978-3-8474-0454-5