

Roxana Marin

The Role of Local Political Elites in East-Central Europe
A Descriptive Inquiry into the Local Leadership in Six
Transitional Democracies of the Region

Annexes

Verlag Barbara Budrich
Opladen • Berlin • Toronto 2021

Annexes for:

Marin, Roxana (2021): The Role of Local Political Elites in East-Central Europe. A Descriptive Inquiry into the Local Leadership in Six Transitional Democracies of the Region. Opladen: Verlag Barbara Budrich.

All rights reserved.

© 2021 Verlag Barbara Budrich GmbH, Opladen, Berlin & Toronto
www.budrich.eu

ISBN 978-3-96665-031-1
DOI 10.3224/96665031A

No part of this publication may be reproduced, stored in or introduced into a retrieval system, or transmitted, in any form, or by any means (electronic, mechanical, photocopying, recording or otherwise) without the prior written permission of Barbara Budrich Publishers. Any person who does any unauthorized act in relation to this publication may be liable to criminal prosecution and civil claims for damages.

The annexes are available for free download on the publisher's website:
<https://doi.org/10.3224/96665031A>.

Annexes

1. The occupational status of the members of the Local Councils in Tecuci and Targovishte, of the Municipal Councils in Česká Lípa, Olešnica, Levice, and of the Body of Representatives in Gyula

Occupation	Number of local councilors											
	Tecuci		Česká Lípa		Olešnica		Gyula		Levice		Targovishte	
Engineer	9	47.36%	11	44%	5	23.8%	3	21.42%	7	29.16%	15	45.45%
Teacher (educator)	4	21.05%	3	12%	8	38.09%	4	28.57%	7	29.16%	6	18.18%
Jurist (lawyer, notary public, etc.)	3	15.78%	3	12%	3	14.28%	3	21.42%	2	8.33%	2	6.06%
Physician	1	5.26%	3	12%	3	14.28%	2	14.28%	5	20.83%	3	9.09%
Entrepreneur					1	4.76%						
Welder	1	5.26%										
Mechanic	1	5.26%									4	12.12%
Technician							1	7.14%	2	8.33%	2	6.06%
Psychologist			1	4%								
Electrician			1	4%								
IT Expert			1	4%					1	4.16%		
Architect			1	4%			1	7.14%			1	3.03%
Musician			1	4%								
Artist (painter)					1	4.76%						

2. The existence of relatives engaged in politics or government of the members of the Local Councils in Tecuci and Targovishte, of the Municipal Councils in Česká Lípa, Olešnica, Levice, and of the Body of Representatives in Gyula

Relatives in politics												
			Česká Lípa		Olešnica		Gyula		Levice		Targovishte	
Yes	1 (brother)	5.26%	0	0%	2	9.52%	0	0%	0	0%	3	9.09%
No	18	94.73%	25	100%	19	90.47%	14	100%	24	100%	30	90.9%

3. The social position of the fathers of the members of the Local Councils in Tecuci and Targovishte, of the Municipal Councils in Česká Lípa, Olešnica, Levice, and of the Body of Representatives in Gyula

Father's social status												
			Česká Lípa		Olešnica		Gyula		Levice		Targovishte	
Lower class (with average or under-average studies)	15	78.94%	17	68%	6	28.57%	10	71.42%	17	70.83%	27	81.81%
Middle class (with high-	3	15.78%	7	28%	10	47.61%	3	21.42%	6	25.01%	4	12.12%

school or university studies)													
Upper class (with university studies)	1	5.26%	1	4%	5	23.8%	1	7.14%	1	4.16%	2	6.06%	

Annexes No. 4. The socio-demographical representativeness of the members of the Local Councils in Tecuci and Targovishte, of the Municipal Councils in Česká Lípa, Olešnica, Levice, and of the Body of Representatives in Gyula

4.1. Nationality

Ethnicity	Number of individuals (expressed also as a percentage from the total)		Number of members of the Local Council (expressed also as a percentage from the total – 19)	
Romanian	40,467	96.13%	19	100%
Hungarian	24	0.05%	0	0%
Roma	1,540	3.65%	0	0%
Jewish	17	0.04%	0	0%
Other ethnicity	46	0.1%	0	0%

(Source: The 2011 Census, <http://recensamant.referinte.transindex.ro/?pg=3&id=1185>, last accessed: 05.12.2015).

Ethnicity	Number of individuals (expressed also as a percentage from the total)		Number of members of the Municipal Council (expressed also as a percentage from the total – 25)	
Czech	36,583	93.06%	23	92%
Moravian	70	0.17%	0	0%
Silesian	6	0.01%	0	0%
Slovak	817	2.07%	2	8%
German	147	0.37%	0	0%
Roma	53	0.13%	0	0%
Polish	120	0.3%	0	0%
Ukrainian	131	0.33%	0	0%
Vietnamese	190	0.48%	0	0%

(Source: The total population = 39,307; <http://www.czso.cz/sldb/sldb2001.nsf/obceen/561380?OpenDocument>, last accessed: 03.03.2012).

Ethnicity	Number of individuals (expressed also as a percentage from the total)		Number of members of the Municipal Council (expressed also as a percentage from the total – 21)	
Polish	35,208	94.21%	21	100%
Germans	1,820	4.87%	0	0%
Tartar	194	0.52%	0	0%

Russians	22	0.06%	0	0%
Lithuanians	59	0.16%	0	0%
Other or undeclared	67	0.18%	0	0%

(Source: The total population = 37,372; http://www.polskawliczbach.pl/gmina_Olesnica_dolnoslaskie, last accessed: 12.04.2015.)

Ethnicity	Number of individuals (expressed also as a percentage from the total)		Number of members of the Municipal Council (expressed also as a percentage from the total – 14)	
Hungarian	25,895	83.4%	14	100%
Romanian	974	3.1%	0	0%
Germans	971	3.1%	0	0%
Roma	102	0.3%	0	0%
Other or undeclared	3,125	10.05%	0	0%

(Source: Total population = 31,067. *Nota bene!* In Census, Hungarians were free to declare more than one ethnicity. http://www.ksh.hu/nepszamlalas/tablak_teruleti_04, last accessed: 20.04.2015.)

Ethnicity	Number of individuals (expressed also as a percentage from the total)		Number of members of the Municipal Council (expressed also as a percentage from the total – 24)	
Slovak	27,050	77.66%	22	91.66%
Hungarian	3,202	9.13%	2	8.33%
Czech	229	0.65%	0	0%
Roma	153	0.43%	0	0%
Polish	38	0.1%	0	0%
Moravian	19	0.05%	0	0%
Ukrainian	11	0.03%	0	0%
Ruthenian	4	0.01%	0	0%
German	12	0.03%	0	0%
Bulgarian	12	0.03%	0	0%
Jewish	2	0.005%	0	0%
Others	64	0.18%	0	0%
Unidentified	4,033	11.57%	0	0%

(Source: The total population = 34,829; <http://egov.levice.sk/Default.aspx?NavigationState=880:0>., last accessed: 4.07.2014.)

Ethnicity	Number of individuals (expressed also as a percentage from the total)		Number of members of the Municipal Council (expressed also as a percentage from the total – 33)	
Bulgarian	29,864	79.4%	21	63.63%
Turks	6,657	17.7%	12	36.36%
Roma	677	1.8%	0%	0%
Non-definable/ Undeclared	413	1.1%	0%	0%

(Source: The total population = 37,611; www.nsi.bg/ORPDOCS/Census2011_1.pop_by_ethnicity.xls, last accessed: 02.04.2015.)

4.2. Religion

Religion	Number of individuals (expressed also as a percentage from the total)		Number of members of the Local Council (expressed also as a percentage from the total – 19)	
Christian-Orthodox	41,391	98.32%	19	100%
Christian-Roman-Catholic	91	0.21%	0	0%
Neo-Protestant – Pentecostals	229	0.54%	0	0%
Neo-Protestant – Adventists	194	0.46%	0	0%
Other religion	189	0.44%	0	0%

(Source: The 2011 Census, <http://recensamant.referinte.transindex.ro/?pg=3&id=1185>, last accessed: 05.12.2015)

Religion	Number of individuals (expressed also as a percentage from the total)		Number of members of the Municipal Council (expressed also as a percentage from the total – 25)	
Atheist	30,997	78.85%	21	84%
Christian-Roman-Catholic	3,841	9.77%	4	16%
Christian-Protestant and Neo- protestants (Hussite Czechoslovak Church, Church of Czech Brothers, Jehova Witnesses Church)	551	1.4%	0	0%
Christian-Orthodox	101	0.25%	0	0%
Other religion	2,978	7.57%	0	0%

(Source: The total population = 39,307; <http://www.czso.cz/sldb/sldb2001.nsf/obceen/561380?OpenDocument>, last accessed: 03.03.2012).

Religion	Number of individuals (expressed also as a percentage from the total)		Number of members of the Municipal Council (expressed also as a percentage from the total – 21)	
Christian-Roman-Catholic	36,445	97.52%	15	71.42%
Christian-Orthodox	118	0.31%	0	0%
Christian-Protestant (Lutherans)	242	0.64%	0	0%
Neo-protestant (Pentecostals)	451	1.2%	0	0%
Undeclared or atheists	116	0.31%	6	28.57%

(Source: The total population = 37,372; http://www.polskawliczbach.pl/gmina_Olesnica_dolnoslaskie, last accessed: 12.04.2015.)

Religion	Number of individuals (expressed also as a percentage from the total)		Number of members of the Municipal Council (expressed also as a percentage from the total – 14)	
Christian-Roman-Catholic	5,726	18.4%	5	35.71%
Protestants-Calvinist	5,560	17.9%	5	35.71%
Christian-Orthodox	606	2%	0	0%
Protestants-Lutherans	507	1.6%	1	7.14%

Irreligious	8,304	26.7%	3	21.42%
Atheists	453	1.5%	0	0%
Non-declared	9,012	29%	0	0%

(Source: Total population = 31,067. http://www.ksh.hu/nepszamlalas/tablak_teruleti_04, last accessed: 20.04.2015.)

Religion	Number of individuals (expressed also as a percentage from the total)		Number of members of the Municipal Council (expressed also as a percentage from the total – 24)	
Christian-Roman-Catholic	17,343	50.39%	18	75%
Reformed Protestant (Calvinist)	2,142	6.22%	3	12.5%
Moravian Brethren	483	1.4%	0	0%
Greek Catholic	119	0.34%	0	0%
Lutherans	1,216	3.53%	0	0%
Neo-protestant (Baptists, Chrismatic, Pentecostals, Jehovah's Witnesses, Adventists of the 7th Day)	5,068	14.72%	1	4.16%
Modrý kríž (Blue Cross)	90	0.26%	0	0%
Others (Muslims, Jewish, etc.)	190	0.55%	0	0%
Atheists	7,761	22.55%	2	8.33%

(Source: The total population = 34,412; <http://egov.levice.sk/Default.aspx?NavigationState=880:0;>, last accessed: 2.11.2014.)

Religion	Number of individuals (expressed also as a percentage from the total)		Number of members of the Municipal Council (expressed also as a percentage from the total – 33)	
Christian-Orthodox	20,535	54.6%	21	63.63%
Muslims	16,060	42.7%	12	36.36%
Christian-Romaa-Catholics	75	0.2%	0	0%
Protestant – Calvinists	30	0.08%	0	0%
Others	150	0.4%	0	0%
Non-declared	716	1.9%	0	0%

(Source: The total population = 37,611; www.nsi.bg/ORPDOCS/Census2011_1.pop_by_religion.xls, last accessed: 02.04.2015.)

4.3. Gender

Gender	Number of individuals (expressed also as a percentage from the total)		Number of members of the Local Council (expressed also as a percentage from the total – 19)	
Male	20,310	47.85%	15	78.94%
Female	22,128	52.14%	4	21.05%

(Source: The County Department of Statistics Galați, http://www.galati.insse.ro/phpfiles/popsst1a_GL.pdf, last accessed: 05.12.2010. The data is from the 1st of January 2010.)

Gender	Number of individuals (expressed also as a percentage from the total)	Number of members of the Municipal Council (expressed also as a percentage from the total – 25)
Male	19,098 48.58%	15 60%
Female	20,209 51.41%	10 40%

(Source: The total population = 39,307; <http://www.czso.cz/sldb/sldb2001.nsf/obceen/561380?OpenDocument>, last accessed: 03.03.2012).

Gender	Number of individuals (expressed also as a percentage from the total)	Number of members of the Municipal Council (expressed also as a percentage from the total – 21)
Male	17,789 47.6%	17 80.95%
Female	19,583 52.4%	4 19.04%

(Source: The total population = 37,372. http://www.polskawliczbach.pl/gmina_Olesnica_dolnoslaskie, last accessed: 12.04.2015.)

Gender	Number of individuals (expressed also as a percentage from the total)	Number of members of the Body of Representatives (expressed also as a percentage from the total – 14)
Male	14,803 47.65%	12 85.71%
Female	16,264 52.34%	2 14.28%

(Source: The total population = 31,067. http://www.ksh.hu/nepszamlalas/tablak_teruleti_04, last accessed: 20.04.2015).

Gender	Number of individuals (expressed also as a percentage from the total)	Number of members of the Municipal Council (expressed also as a percentage from the total – 24)
Male	16,355 47.63%	17 70.83%
Female	17,982 52.36%	7 29.16%

(Source: The total population = 34,412; [http://egov.levice.sk/Default.aspx?NavigationState=880:0](http://egov.levice.sk/Default.aspx?NavigationState=880:0;)., last accessed: 2.11.2014.)

Gender	Number of individuals (expressed also as a percentage from the total)	Number of members of the Municipal Council (expressed also as a percentage from the total – 33)
Male	18,577 49.32%	26 78.78%
Female	19,034 50.61%	7 21.21%

(Source: The total population = 37,611; www.nsi.bg/ORPDOCS/Census2011_1.pop_by_gender.xls, last accessed: 02.04.2015.)

4.4. Age

Age	The entire population	The Local Council (19)
-----	-----------------------	------------------------

20-29	7,009	16.65%	0	0%
30-39	7,244	17.2%	1	5.26%
40-49	5,152	12.23%	6	31.57%
50-59	6,524	15.49%	7	36.84%
60-69	3,601	8.55%	4	21.05%
70-79	2,436	5.78%	1	5.26%
Over 80	839	1.99%	0	0%

(Source: The Center of Resources for Ethno-cultural Diversity, http://www.edrc.ro/recensamant.jsp?regiune_id=503&judet_id=700&localitate_id=702, last accessed: 05.12.2015)

Age	The entire population		The Municipal Council (25)	
20-29	6,822	17.35%	2	8%
30-39	6,151	15.64%	6	24%
40-49	5,800	14.75%	4	16%
50-59	4,899	12.46%	10	40%
60-69	1,347	3.42%	3	12%
70-79	2,028	5.15%	0	0%
Over 80	1,407	3.57%	0	0%

(Source: The total population = 39,307; <http://www.czso.cz/sldb/sldb2001.nsf/obceen/561380?OpenDocument>, last accessed: 03.03.2012).

Age	The entire population		The Municipal Council (21)	
20-29	5,129	13.72%	0	0%
30-39	6,430	17.2%	3	14.28%
40-49	4,756	12.72%	8	38.09%
50-59	5,054	13.52%	6	28.57%
60-69	4,745	12.69%	4	19.04%
70-79	2,611	6.98%	0	0%
Over 80	1,355	3.62%	0	0%

(Source: The total population = 37,372. The age segments 0-19 years old represent 7,273 – 19.46% of the total population. http://www.polskawliczbach.pl/gmina_Olesnica_dolnoslaskie, last accessed: 12.04.2015.)

Age	The entire population		The Body of Representatives (14)	
20-29	3,324	10.7%	0	0%
30-39	4,473	14.4%	2	14.28%
40-49	4,100	13.2%	5	35.71%
50-59	4,846	15.6%	5	35.71%
60-69	3,945	12.7%	2	14.28%
70-79	2,703	8.7%	0	0%
Over 80	1,460	4.7%	0	0%

(Source: The total population = 31,067. The age segments ranging from 0 to 19 years old represent 20.1% of the total population. http://www.ksh.hu/nepszamlalas/tablak_teruleti_04, last accessed: 20.04.2015)

Age	The entire population		The Municipal Council (24)	
20-29	4,436	13.37%	0	0%
30-39	5,266	15.87%	8	33.33%
40-49	5,298	15.97%	5	20.83%
50-59	4,875	14.69%	9	37.5%

60-69	4,622	13.93%	2	8.33%
70-79	1,993	6%	0	0%
Over 80	937	2.82%	0	0%

(Source: The total population = 34,412; The age segments ranging from 0 to 19 years old represent 17.31% of the total population, or 5,743 inhabitants. <http://egov.levice.sk/Default.aspx?NavigationState=880:0>., last accessed: 2.11.2014.)

Age	The entire population		The Local Council (33)	
20-29	4,535	12.05%	0	0%
30-39	5,726	15.22%	2	6.06%
40-49	6,036	16.04%	10	30.3%
50-59	5,527	14.69%	12	36.36%
60-69	4,640	12.33%	7	21.21%
70-79	2,676	7.11%	2	6.06%
Over 80	1,021	2.71%	0	0%

(Source: www.nsi.bg/ORPDOCS/Census2011_1.pop_by_age.xls, last accessed: 02.04.2015. The total number of the population = 30,161, by excluding the 0-19 age segment, comprising 7,450 of the total population of the town.)

4.5. Level of education

Level of education	The entire population	The Local Council
Illiterates	986 – 2.55%	0 – 0%
No graduated school	2,026 – 5.24%	0 – 0%
Primary education (4 graduated classes)	6,501 – 16.81%	0 – 0%
Secondary education:	24,638 – 63.74%	2 – 10.52%
a. Superior secondary education	16,160 – 65.58% (41.80% from the total)	2 – 100% (10.52% from the total)
-> high-school studies	9,202 – 56.94% (23.80% from the total)	1 – 50% (5.26% from the total)
-> professional studies	6,958 – 43.05% (18.00% from the total)	1 – 50% (5.26% from the total)
b. Inferior secondary education (8 graduated classes)	8,478 – 34.41% (21.93% from the total)	0 – 0%
Post-high-school studies	1,601 – 4.14%	0%
University studies	2,888 – 7.47%	17 – 89.47%
Others	12 – 0.03%	0 – 0%

(The total of the population was represented by the inhabitants of Tecuci over 10 years old = 38,652. The source for the population was the County Department of Statistics Galați, "The file of the Municipality of Tecuci" ["Fișa Municipiului Tecuci"], 2002.)

Level of education	The entire population	The Municipal Council
Illiterates	0 – 0%	0 – 0%
No graduated school	120 – 0.37%	0 – 0%
Primary education (4 graduated classes)	7,667 – 24.13%	0 – 0%
Secondary education:	20,380 – 64.14%	1 – 4%
a. Superior secondary education (high-school studies)	12655 – 62.09% (39.83% from the total)	1 – 100% (4% from the total)
b. Inferior secondary education		

(8 graduated classes)	7725 – 37.9% (24.31% from the total)	0 – 0% (0% from the total)
Post-high-school studies	997 – 3.13%	0%
University studies	2142 – 6.74%	24 – 96%
Others	466 – 1.46%	0 – 0%

(The total of the population was represented by the inhabitants of Česká Lípa over 15 years old = 31,772 (for the latest census of 2011). Source: <http://www.czso.cz/sldb/sldb2001.nsf/obceen/561380?OpenDocument>, last accessed: 03.03.2012.)

Level of education	The entire population	The Municipal Council
Incomplete basic secondary education and no education	710 – 1.9%	0 – 0%
Basic education	7,362 – 19.7%	0 – 0%
Lower secondary education	2,055 – 5.5%	0 – 0%
Vocational education	9,418 – 25.2%	
Secondary education:	<u>11,959 – 32%</u>	<u>4 – 19.04%</u>
a. General secondary education (high school studies)	4,933 – 13.2%	4 – 100% (19.04% from the total)
b. Professional and vocational secondary education	7,025 – 18.8%	0 – 0% (0% from the total)
Post secondary studies	1,009 – 2.7%	3 – 14.28%
University studies	4,858 – 13%	<u>14 – 66.66%</u>
- law		3 – 21.42% (14.28% from the total)
- humanistic sciences (e.g. theology)		6 – 42.85% (28.57% from the total)
- exact sciences (e.g. cybernetics)		1 – 7.14% (4.76% from the total)
- natural sciences		3 – 21.42% (14.28% from the total)
- social sciences		1 – 7.14% (4.76% from the total)
- other		0 – 0%
Others	0 – 0%	0 – 0%

(Source: The total population = 37,372. http://www.polskawliczbach.pl/gmina_Olesnica_dolnoslaskie, last accessed: 12.04.2015.)

Level of education	The entire population	The Body of Representatives
Illiterates	434 – 1.4%	0 – 0%
No graduated school	1,367 – 4.4%	0 – 0%
Primary education (4 graduated classes)	186 – 0.6%	0 – 0%
Secondary education:	<u>24,481 – 78.8%</u>	0 – 0%
a. Superior secondary education		0 – 0%
-> high-school studies	8,015 – 25.8%	0 – 0%
-> professional studies	5,778 – 18.6%	0 – 0%
b. Inferior secondary education (8 graduated classes)	10,687 – 34.4%	0 – 0%
Post-high-school studies	590 – 1.9%	1 – 7.14%
University studies	4,007 – 12.9%	13 – 92.85%
Others	0 – 0%	0 – 0%

(Source: Total population = 31,067. http://www.ksh.hu/nepszamlalas/tablak_teruleti_04, last accessed: 20.04.2015.)

Level of education	The entire population	The Municipal Council
No schooling	5,656 – 16.23%	0 – 0%
Basic	3,700 – 10.61%	0 – 0%
Training (no school)	4,148 – 11.9%	0 – 0%
Vocational (no school)	2,793 – 8.01%	0 – 0%
Full secondary vocational (with GCSE)	926 – 2.65%	1 – 4.16%
Secondary vocational (with GCSE)	7,683 – 22.05%	0 – 0%
General secondary	2,221 – 6.37%	0 – 0%
Higher professional education	798 – 2.29%	0 – 0%
University studies		23 – 95.83%
Bachelor studies	1,429 – 4.1%	
Masters' studies	5,254 – 15.07%	
PhD studies	233 – 0.66%	

(Source: The total population = 34,412; <http://egov.levice.sk/Default.aspx?NavigationState=880:0;> last accessed: 2.11.2014.)

Level of education	The entire population	The Local Council
Illiterates	1,015 – 2.7%	0 – 0%
No graduated school	1,579 – 4.2%	0 – 0%
Primary education (4 graduated classes)	5,190 – 13.8%	0 – 0%
Secondary education:	25,462 – 67.7%	4 – 12.12% from the total
a. Upper secondary education	16,060 – 42.7%	4 – 100% (12.12% from the total)
-> high-school studies	9,440 – 25.1%	0 – 0% (0% from the total)
-> professional studies	6,619 – 17.6%	4 – 100% (12.12% from the total)
b. Lower secondary education (8 graduated classes)	9,402 – 25%	0 – 0% (0% from the total)
Post-high-school studies	1,015 – 2.7%	2 – 6.06%
Higher education	3,347 – 8.9%	27 – 81.81%
Others	0 – 0%	0 – 0%

(Source: The total population = 37,611; <http://nsi.bg/bg/content/3374/образование-и-учене-през-целия-живот>, last accessed: 12.04.2015.)

4.6. Marital status

Matrimonial status	The entire population		The Local Council	
Married	17,014	39.13%	16	84.21%
Unmarried	20,447	47.03%	1	5.26%
Divorced	1,585	3.64%	0	0%
Widow	3,048	7.01%	2	10.52%
<i>De facto</i> marital status (consensual union)	1,382	3.17%	0	0%

(The total of the population – 43,476 – is the one from 2010. The source for the population was the County Department of Statistics Galați, "The file of the Municipality of Tecuci" ["Fișa Municipiului Tecuci"].)

Matrimonial status	The entire population		The Municipal Council	
Married	16,136	41.05%	17	68%
Unmarried	16,283	41.42%	5	20%
Divorced	4,405	11.2%	2	8%
Widow	2,235	5.68%	1	4%
<i>De facto</i> marital status (consensual union)	248	0.63%	0	0%

(Source: The total population = 39,307; <http://www.czso.cz/sldb/sldb2001.nsf/obceen/561380?OpenDocument>, last accessed: 03.03.2012).

Matrimonial status	The entire population		The Municipal Council	
Married	21,003	56.2%	14	66.66%
Unmarried	10,763	28.8%	4	19.04%
Divorced	1,794	4.8%	0	0%
Widow	3,513	9.4%	3	14.28%
<i>De facto</i> marital status (consensual union)	299	0,8%	0	0%

(Source: The total population = 37,372. http://www.polskawliczbach.pl/gmina_Olesnica_dolnoslaskie, last accessed: 12.04.2015.)

Matrimonial status	The entire population		The Body of Representatives	
Married	13,452	43.3%	9	64.28%
Unmarried	9,755	31.4%	2	14.28%
Divorced	3,883	12.5%	1	7.14%
Widow	3,945	12.7%	2	14.28%
<i>De facto</i> marital status (consensual union)	0	0%	0	0%

(Source: Total population = 31,067. http://www.ksh.hu/nepszamlalas/tablak_teruleti_04, last accessed: 20.04.2015.)

Matrimonial status	The entire population		The Municipal Council	
Married	13,764	40%	16	66.66%
Unmarried	14,315	41.6%	5	20.83%
Divorced	3,888	11.3%	2	8.33%
Widow	2,443	7.1%	1	4.16%
<i>De facto</i> marital status (consensual union)	0	0%	0	0%

(Source: The total population = 34,412; <http://egov.levice.sk/Default.aspx?NavigationState=880:0;> last accessed: 2.11.2014.)

Matrimonial status	The entire population		The Local Council	
Married	18,504	49.2%	27	81.81%
Unmarried	13,577	36.1%	2	6.06%
Divorced	1,579	4.2%	1	3.03%
Widow	3,159	8.4%	3	9.09%
<i>De facto</i> marital status (consensual union)	789	2.1%	0	0%

(Source: The total population = 37,611; www.nsi.bg/ORPDOCS/Census2011_1.pop_by_marriage.xls, last accessed: 02.04.2015.)

4.7. Place of birth

Place of birth	The entire population		The Local Council	
Tecuci	41,433	98.42%	10	52.63%
Other town	142	0.33%	2	10.52%
Other rural place (commune, village)	475	1.12%	7	36.84%
Other country	44	0.10%	0	0%

(The total of the population – 42,094 – is the one from 2002, because no statistics regarding the place of birth of the inhabitants of Tecuci is available for 2010 and the last such statistics is from 2002, the year the Census of the Population in Romania was conducted. The source for the population was the County Department of Statistics Galați, "The file of the Municipality of Tecuci" ["Fișa Municipiului Tecuci"], 2002.)

Place of birth	The entire population		The Municipal Council	
Česká Lípa	38,299	97.43%	17	68%
Other town	609	1.54%	4	16%
Other rural place (commune, village)	399	1.01%	4	16%
Other country	0	0%	0	0%

(Source: The total population = 39,307; <http://www.czso.cz/sldb/sldb2001.nsf/obceen/561380?OpenDocument>, last accessed: 03.03.2012).

Place of birth	The entire population		The Municipal Council	
Oleśnica	36,520	97.72%	12	57.14%
Other town	67	0.18%	4	19.04%
Other rural place (commune, village)	706	1.89%	5	23.8%
Other country	78	0.21%	0	0%

(Source: The total population = 37,372; http://www.polskawliczbach.pl/gmina_Olesnica_dolnoslaskie, last accessed: 12.04.2015.)

Place of birth	The entire population		The Body of Representatives	
Gyula	30,455	98.03%	9	64.28%
Other town	214	0.69%	0	0%
Other rural place (commune, village)	363	1.17%	5	35.71%
Other country	341	0.11%	0	0%

(Source: Total population = 31,067. http://www.ksh.hu/nepszamlalas/tablak_teruleti_04, last accessed: 20.04.2015.)

Place of birth	The entire population		The Municipal Council	
Levice	33,428	97.14%	15	62.5%
Other town	365	1.06%	4	16.66%
Other rural place (commune, village)	561	1.63%	5	20.83%
Other country	58	0.17%	0	0%

(Source: The total population = 34,412; <http://egov.levice.sk/Default.aspx?NavigationState=880:0>., last accessed: 2.11.2014.)

Place of birth	The entire population		The Local Council	
Targovishte	37,050	98.51%	17	51.51%
Other town	75	0.2%	3	9.09%
Other rural place (commune, village)	455	1.21%	13	39.39%
Other country	30	0.08%	0	0%

(Source: The total population = 37,611; www.nsi.bg/ORPDOCS/Census2011_1.pop_by_ethnicity.xls, last accessed: 02.04.2015).

Annexes No. 5. The general results of the questionnaire

Q1: “In your case, what is the major motivation for becoming involved in politics ?”

	Tecuci		Česká Lípa		Olešnica		Gyula		Levice		Targovishte	
Politics is my way of life	0	0%	0	0%	2	11.76%	0	0%	0	0%	0	0%
Loyalty towards the doctrine of a certain party	1	4.76%	0	0%	0	0%	0	0%	0	0%	3	7.31%
To establish social friendships and contacts	4	19.04%	2	5.55%	3	17.64%	4	23.52%	1	3.57%	7	17.07%
The very fun and excitement of politics	0	0%	1	2.77%	3	17.64%	0	0%	1	3.57%	0	0%
To build a personal career in politics	0	0%	3	8.33%	0	0%	1	5.88%	2	7.14%	2	4.87%
Desire to influence the policies of the government	6	28.57%	6	16.66%	0	0%	5	29.41%	4	14.28%	12	29.26%
Desire to be close to influential people	0	0%	1	2.77%	0	0%	0	0%	0	0%	0	0%
The very feeling of obligation towards the community	9	42.85%	22	61.11%	9	52.94%	4	23.52%	19	67.85%	15	36.58%
The belief involvement in politics will help with business contacts	0	0%	0	0%	0	0%	0	0%	0	0%	0	0%
Desire for recognition in the community	1	4.76%	1	2.77%	0	0%	3	17.64%	1	3.57%	2	4.87%

(total no. of answers: 21, 36, 17, 17, 28, and 41, respectively)

Q2: “In your case, what is the major motivation for wanting to become a local councilor ?”

	Tecuci		Česká Lípa		Olešnica		Gyula		Levice		Targovishte	
Politics is my way of life	0	0%	3	7.31%	4	22.22%	1	4.16%	2	6.89%	0	0%
Loyalty towards the doctrine of a certain party	1	4.34%	0	0%	0	0%	0		0		2	4.44%
To establish social friendships and contacts	2	8.69%	4	9.75%	2	11.11%	5	20.83%	1	3.44%	6	13.33%
The very fun and	0	0%	1	2.43%	1	5.55%	0		1	3.44%	0	0%

excitement of politics												
To build a personal career in politics	0	0%	2	4.87%	0	0%	3	12.5%	3	10.34%	2	4.44%
Desire to influence the policies of the government	8	34.78%	8	19.51%	0	0%	7	29.16%	8	27.58%	15	33.33%
Desire to be close to influential people	0	0%	0	0%	0	0%	0		0		0	0%
The very feeling of obligation towards the community	10	43.47%	22	53.65%	11	61.11%	7	29.16%	12	41.37%	17	37.77%
The belief involvement in politics will help with business contacts	0	0%	0	0%	0	0%	0		0		0	0%
Desire for recognition in the community	2	8.69%	1	2.43%	0	0%	1	4.16%	2	6.89%	3	6.66%

(total no. of answers: 23, 41, 18, 24, 29, and 45, respectively)

Q3: “Would you run for another mandate of local councilor ?”

	Tecuci		Česká Lípa		Olešnica		Gyula		Levice		Targovishte	
Yes	9	52.94%	14	63.63%	7	38.88%	10	71.42%	15	62.5%	18	54.54%
No	4	23.52%	3	13.63%	0	0%	4	28.57%	6	25%	13	39.39%
Don't know/ Don't answer	4	23.52%	5	22.72%	11	61.11%	0	0%	3	12.5%	2	6.06%

(total no. of answers: 17, 22, 18, 14, 24, and 33, respectively)

Q4: “Which of the spheres of competence below do you think it should be granted a special importance ?”

	Tecuci		Česká Lípa		Olešnica		Gyula		Levice		Targovishte	
Public improvements	9	16.98%	15	24.19%	5	11.90%	4	10.52%	15	24.59%	11	16.41%
Education	8	15.09%	6	9.67%	9	21.42%	9	23.68%	7	11.47%	10	14.92%
Health care	6	11.32%	3	4.83%	4	9.52%	3	7.89%	3	4.91%	7	10.44%
Public safety	9	16.98%	2	3.22%	2	4.76%	1	2.63%	2	3.27%	11	16.41%
Social services (including unemployment and housing)	4	7.54%	19	30.64%	7	16.66%	6	15.78%	18	29.50%	5	7.46%
Economic development	13	24.52%	14	22.58%	7	16.66%	6	15.78%	13	21.31%	16	23.88%
Pollution	1	1.88%	1	1.61%	2	4.76%	1	2.63%	1	1.63%	2	2.98%
Minorities rights and interethnic relations	2	3.77%	1	1.61%	0	0%	3	7.89%	1	1.63%	3	4.47%
Culture, sport, recreation and youth activities	1	1.88%	1	1.61%	6	14.28%	5	13.15%	1	1.63%	2	2.98%

(total no. of answers: 53, 62, 42, 38, 61, and 67, respectively)

Q5: “In which of the following spheres of competence do you think significant measures can be taken at the local level (*i.e.* that it exists sufficient political power to operate improvements at the local level) ?”

	Tecuci		Česká Lípa		Olešnica		Gyula		Levice		Targovishte	
Public improvements	8	13.55%	17	26.98%	4	10.25%	3	8.57%	17	27.41%	10	13.69%
Education	8	13.55%	3	4.76%	10	25.64%	9	25.71%	3	4.83%	10	13.69%
Health care	6	10.16%	2	3.17%	6	15.38%	5	14.28%	2	3.22%	7	9.58%
Public safety	7	11.86%	12	19.04%	1	2.56%	1	2.85%	11	17.74%	8	10.95%
Social services (including unemployment and housing)	11	18.64%	15	23.8%	5	12.82%	5	14.28%	15	24.19%	13	17.80%
Economic development	3	5.08%	9	14.28%	8	20.51%	8	22.85%	9	14.51%	4	5.47%
Pollution	0	0%	1	1.58%	2	5.12%	2	5.71%	1	1.61%	0	0%
Minorities rights and interethnic relations	4	6.77%	1	1.58%	0	0%	0	0%	1	1.61%	5	6.84%
Culture, sport, recreation and youth activities	12	20.33%	3	4.76%	3	7.69%	2	5.71%	3	4.83%	16	21.91%

(total no. of answers: 59, 63, 39, 35, 62, and 73, respectively)

Q6: “In which of the following spheres of competence do you think efficient measures had been already taken during the last years ?”

	Tecuci		Česká Lípa		Olešnica		Gyula		Levice		Targovishte	
Public improvements	7	14.58%	10	19.23%	11	26.19%	10	26.31%	10	19.60%	9	14.51%
Education	5	10.41%	0	0%	8	19.04%	7	18.42%	1	1.96%	6	9.67%
Health care	1	2.08%	0	0%	2	4.76%	2	5.26%	1	1.96%	1	1.61%
Public safety	4	8.33%	12	23.07%	2	4.76%	1	2.63%	11	21.56%	5	8.06%
Social services (including unemployment and housing)	10	20.83%	13	25%	8	19.04%	7	18.42%	12	23.52%	13	20.96%
Economic development	3	6.25%	4	7.69%	0	0%	0	0%	4	7.84%	4	6.45%
Pollution	3	6.25%	1	1.92%	1	2.38%	1	2.63%	1	1.96%	4	6.45%
Minorities rights and interethnic relations	5	10.41%	0	0%	0	0%	1	2.63%	0	0%	6	9.67%
Culture, sport, recreation and youth activities	10	20.83%	12	23.07%	10	23.80%	9	23.68%	11	21.56%	14	22.58%

(total no. of answers: 48, 52, 42, 38, 51, and 62, respectively)

Q7: “On which of the following issues do you think you can exert a personal influence for the improvement of the situation ?”

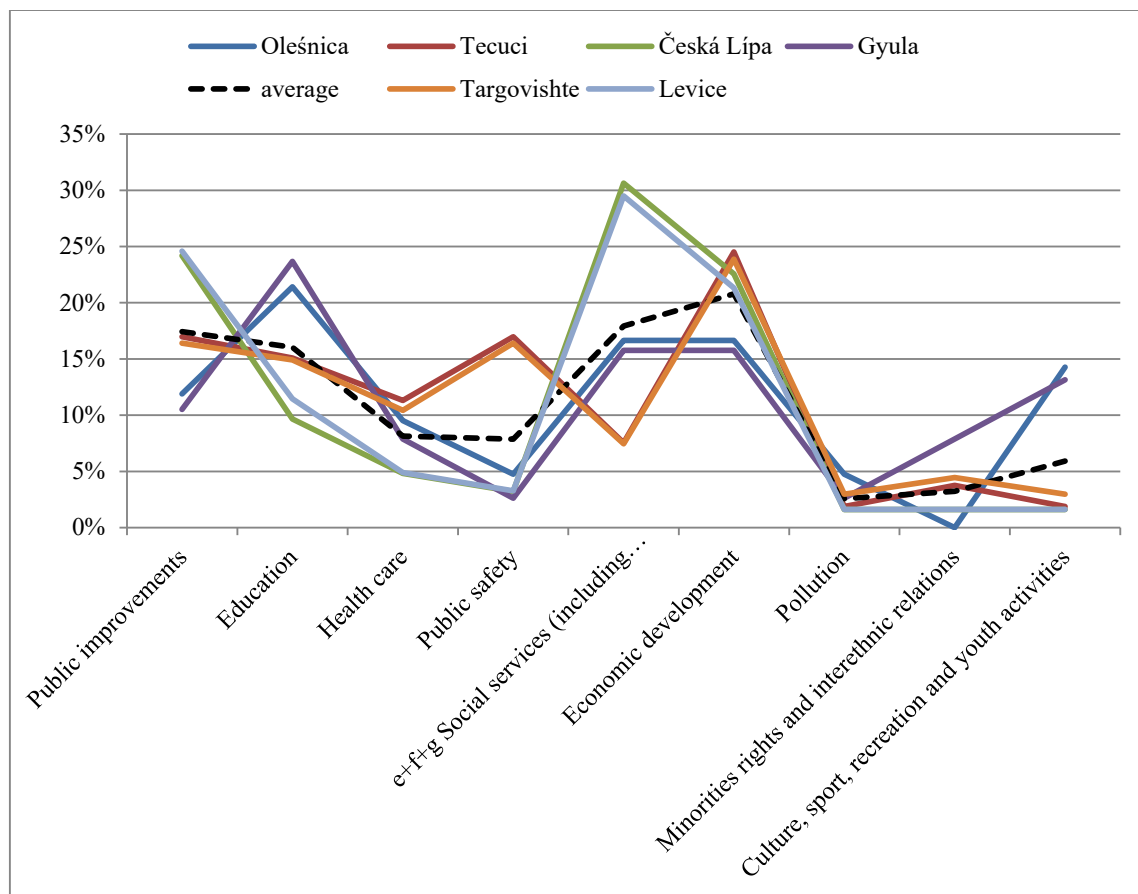
	Tecuci		Česká Lípa		Olešnica		Gyula		Levice		Targovishte	
Public	11	33.33%	11	35.48%	8	21.62%	7	21.21%	10	33.33%	17	36.17%

improvements												
Education	3	9.09%	4	12.9%	8	21.62%	7	21.21%	4	13.33%	4	8.51%
Health care	1	3.03%	3	9.67%	1	2.70%	1	3.03%	3	10%	1	2.12%
Public safety	4	12.12%	1	3.22%	6	16.21%	5	15.15%	1	3.33%	5	10.63%
Social services (including unemployment and housing)	3	9.09%	6	19.35%	3	8.10%	2	6.06%	6	20%	4	8.51%
Economic development	7	21.21%	3	9.67%	1	2.70%	1	3.03%	3	10%	10	21.27%
Pollution	0	0%	1	3.22%	0	0%	0	0%	1	3.33%	0	0%
Minorities rights and interethnic relations	2	6.06%	0	0%	0	0%	2	6.06%	0	0%	3	6.38%
Culture, sport, recreation and youth activities	2	6.06%	2	6.45%	10	27.02%	9	27.27%	2	6.81%	3	6.38%

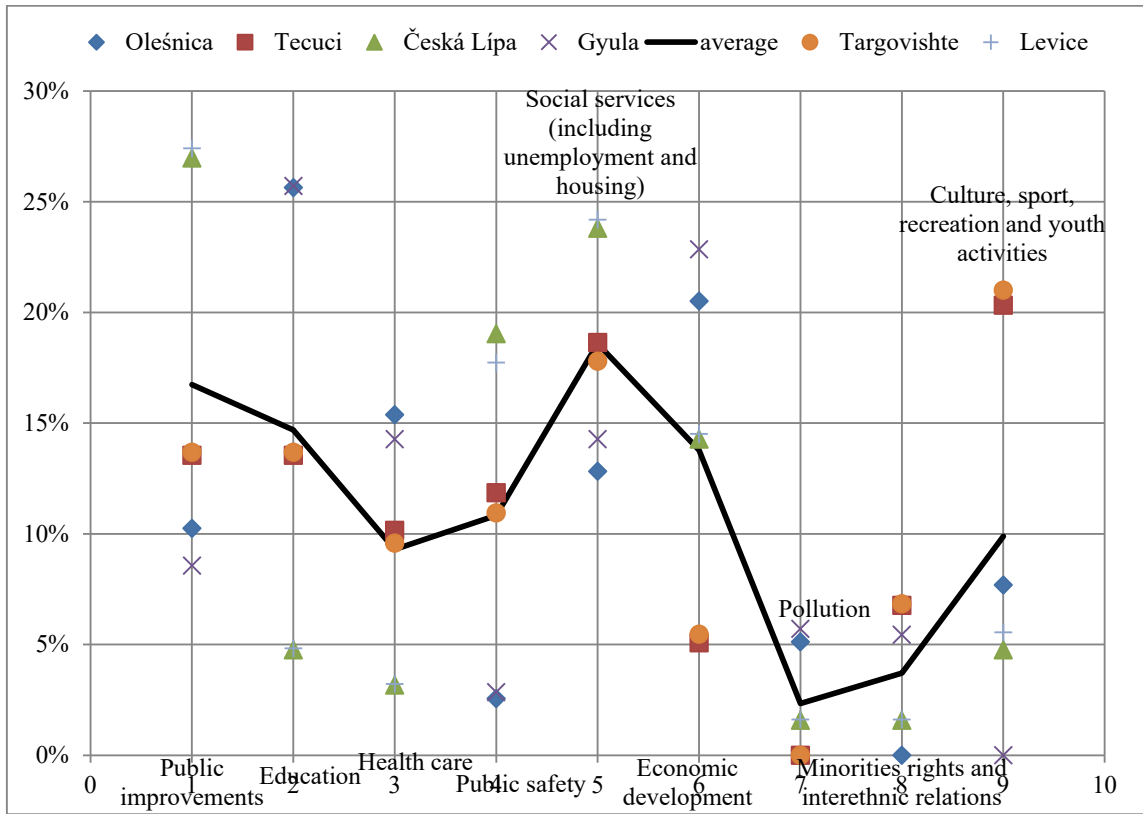
(total no. of answers: 33, 31, 37, 33, 30, and 47, respectively)

Graphs 1, 2, 3, 4 The priorities of the municipal councilors (Source: The results obtained through the administration of the questionnaire on the six groups of local/ municipal councilors.)

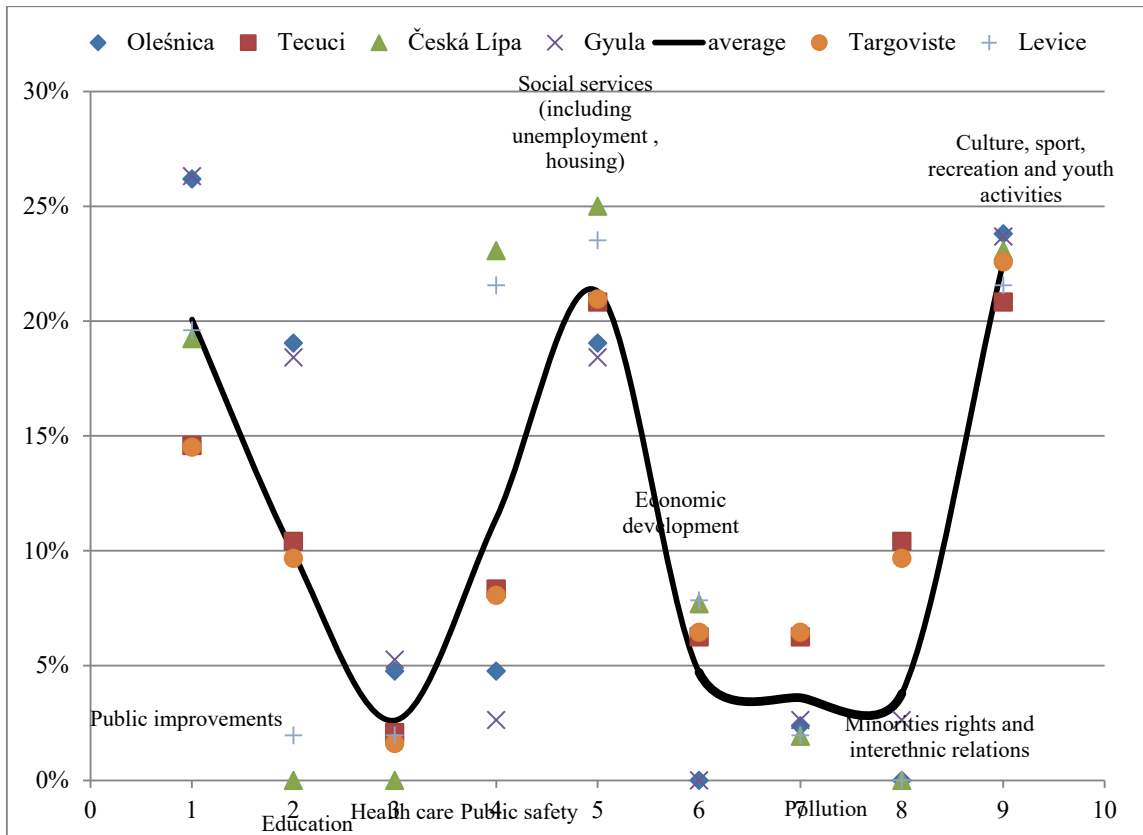
Graph 1 Spheres to which a special importance should be granted



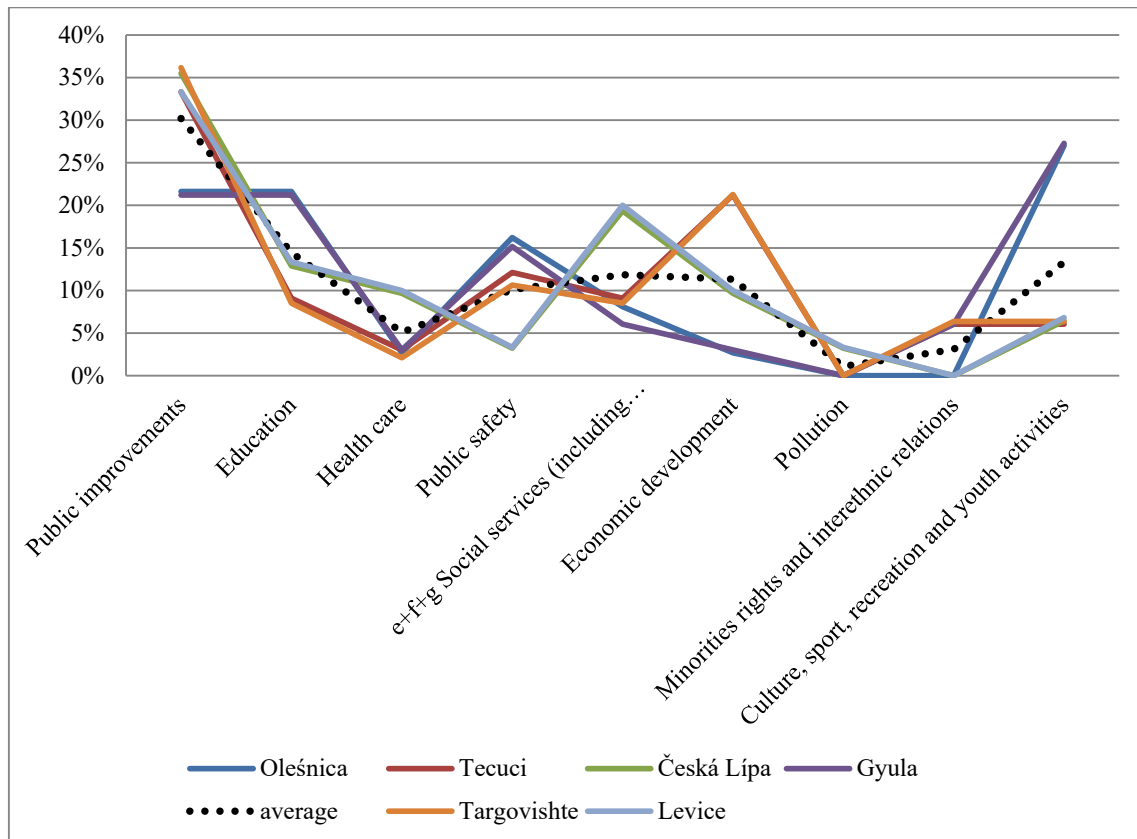
Graph 2 Spheres in which considerable measures can be taken at the local level



Graph 3 Spheres in which effective measures have already been taken

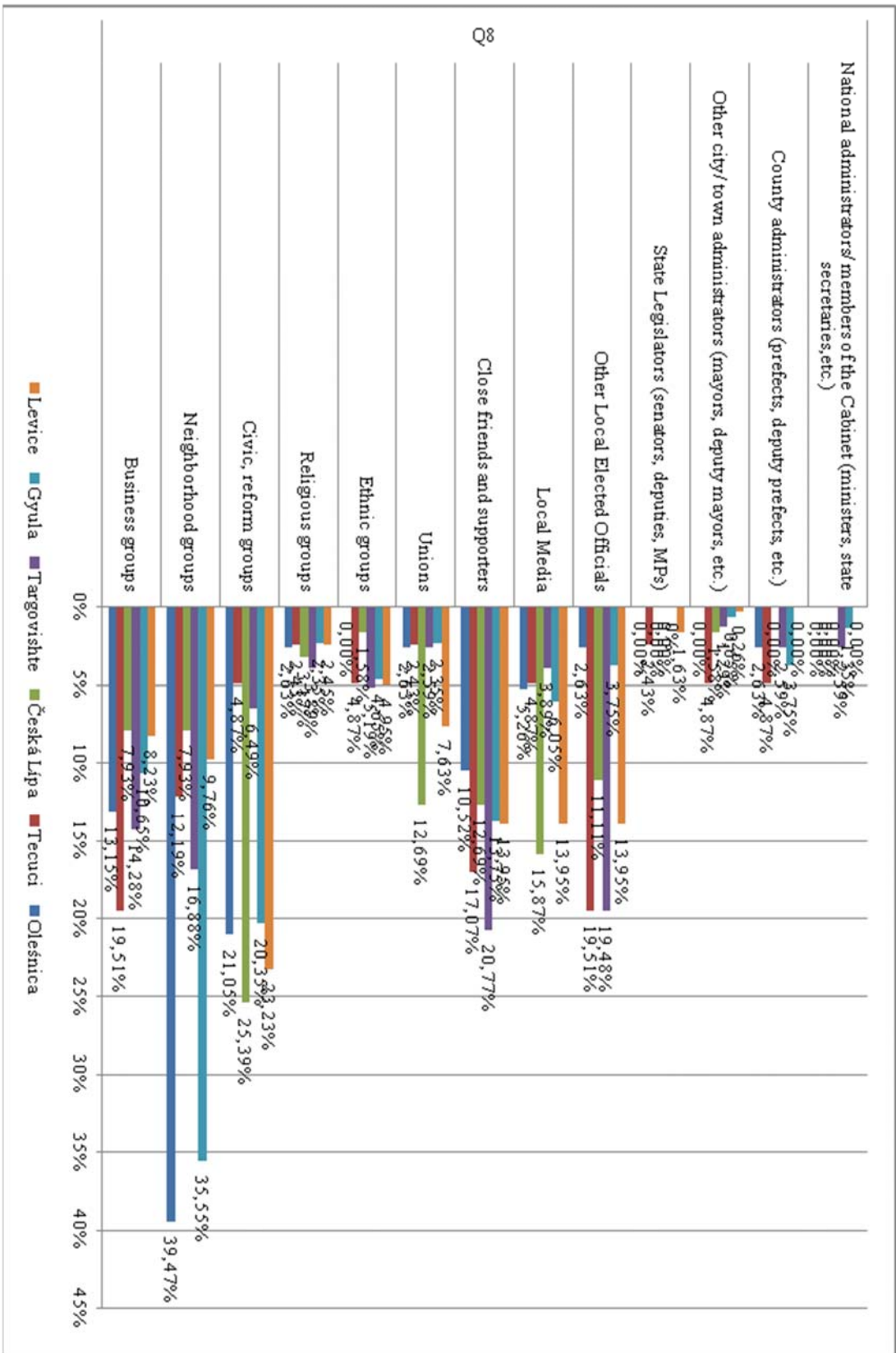


Graph 4 Spheres in which the local/ municipal councilor exerts a personal influence

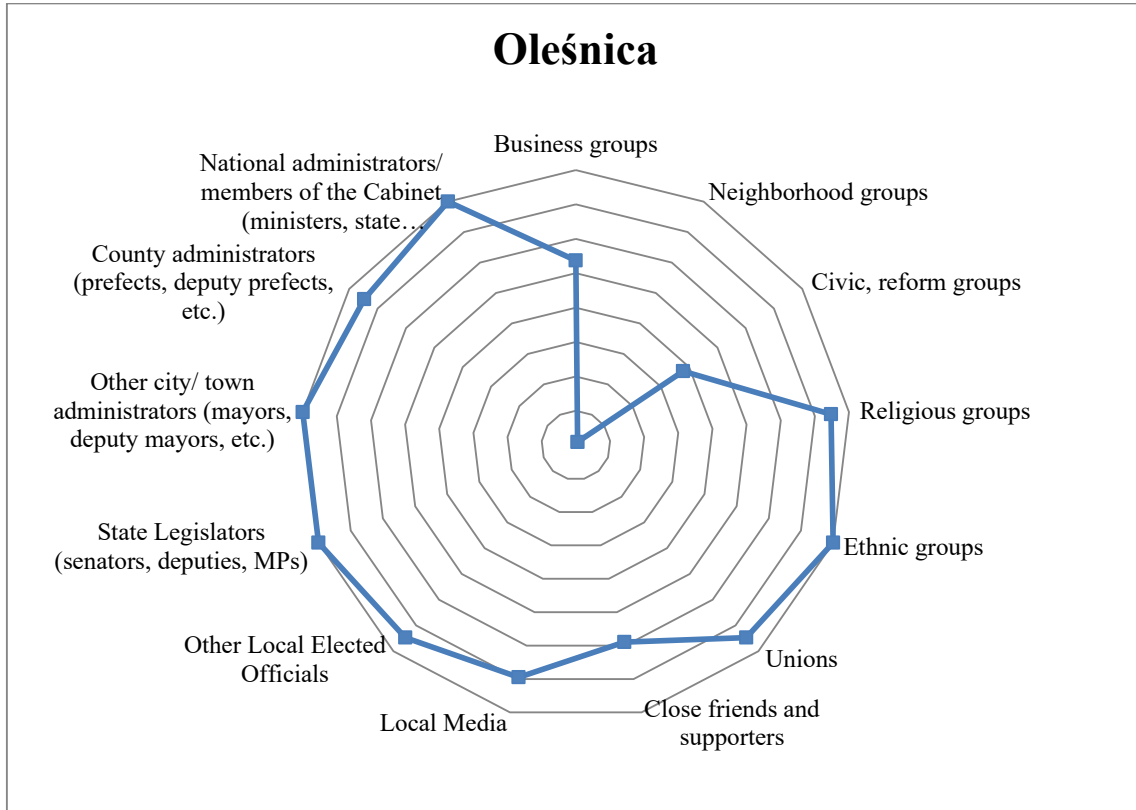


Q8: “To which of the following groups do you have the most numerous contacts and interactions ?”

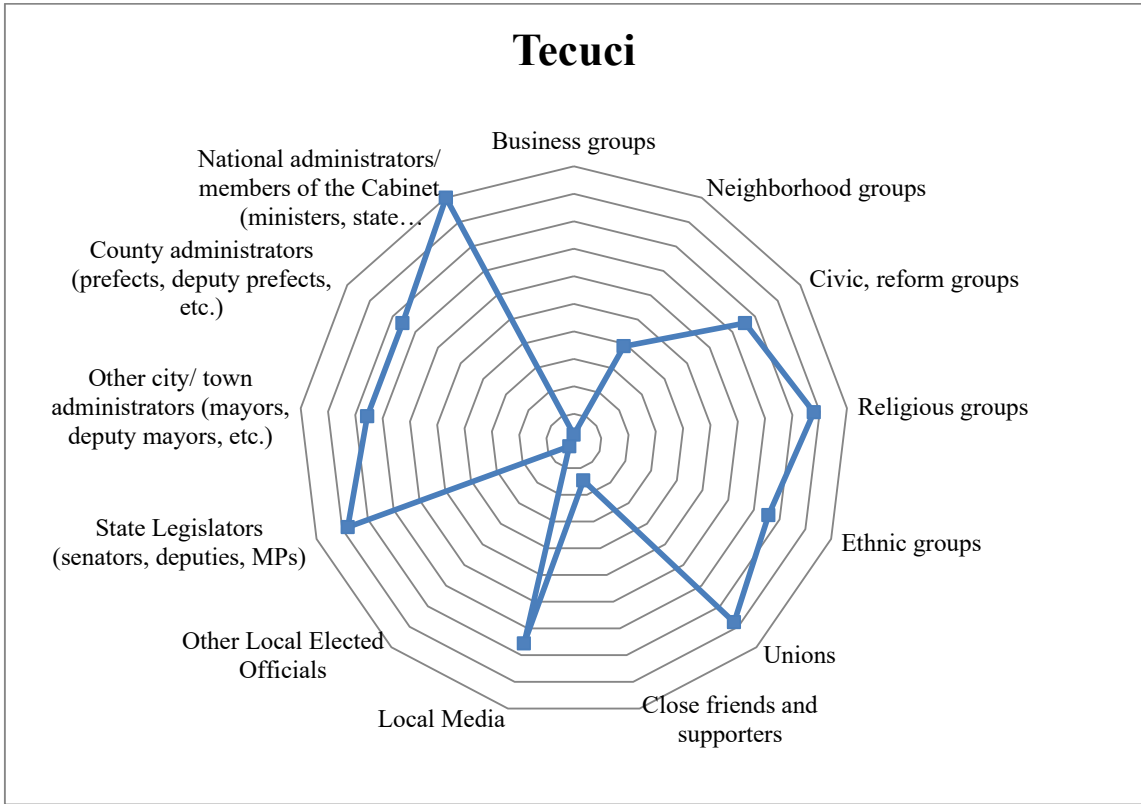
(total no. of answers: 41, 63, 38, 31, 62, and 55, respectively) (**Graph 5**)



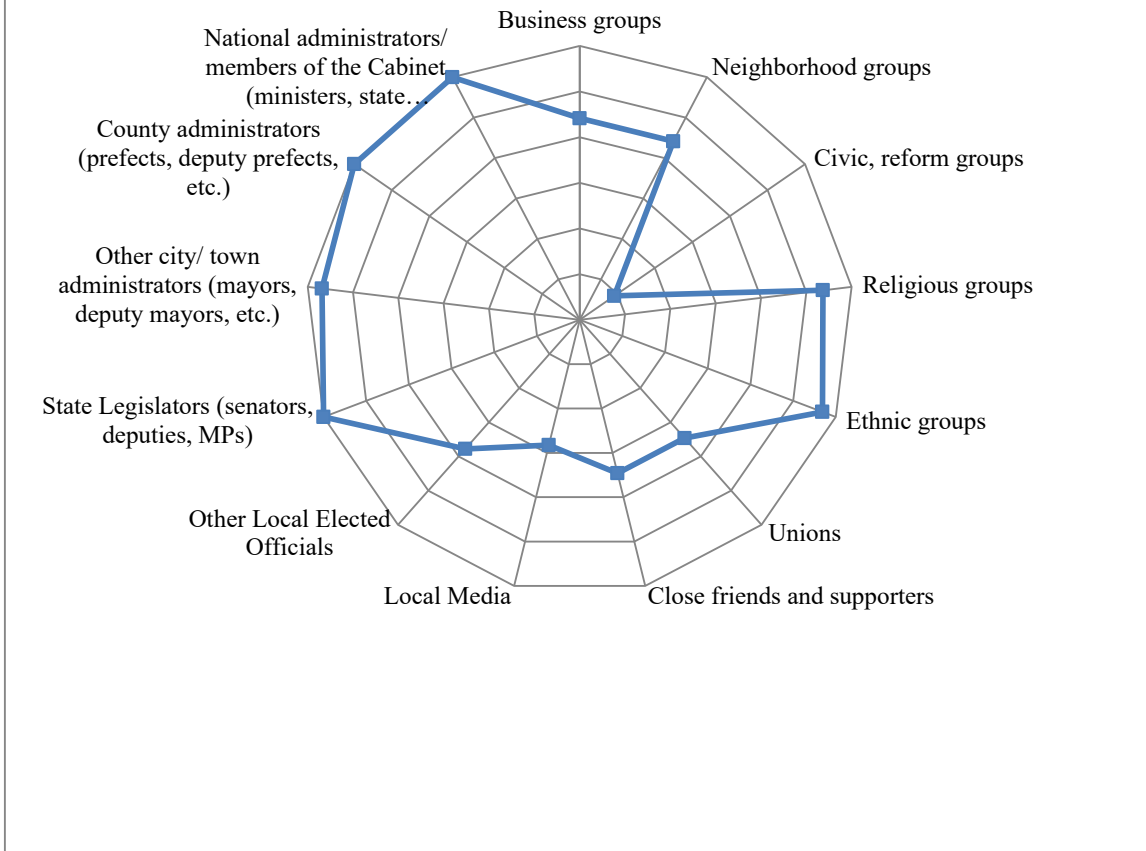
Graphs 6.a, 6.b, 6.c, 6.d, 6.e, 6.f. Networks of local power (Note: the center is considered to represent the local political elite) (Source: The construction of the networks was based on the results obtained through the administration of the questionnaire on the six groups of local/ municipal councilors.)



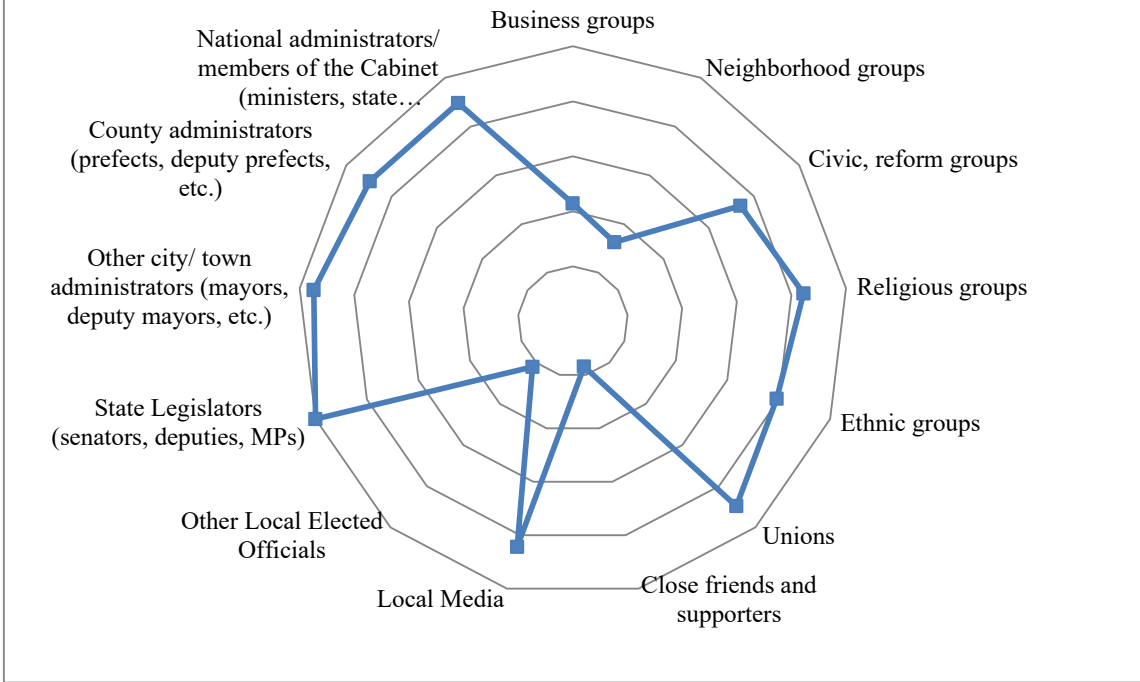
Tecuci



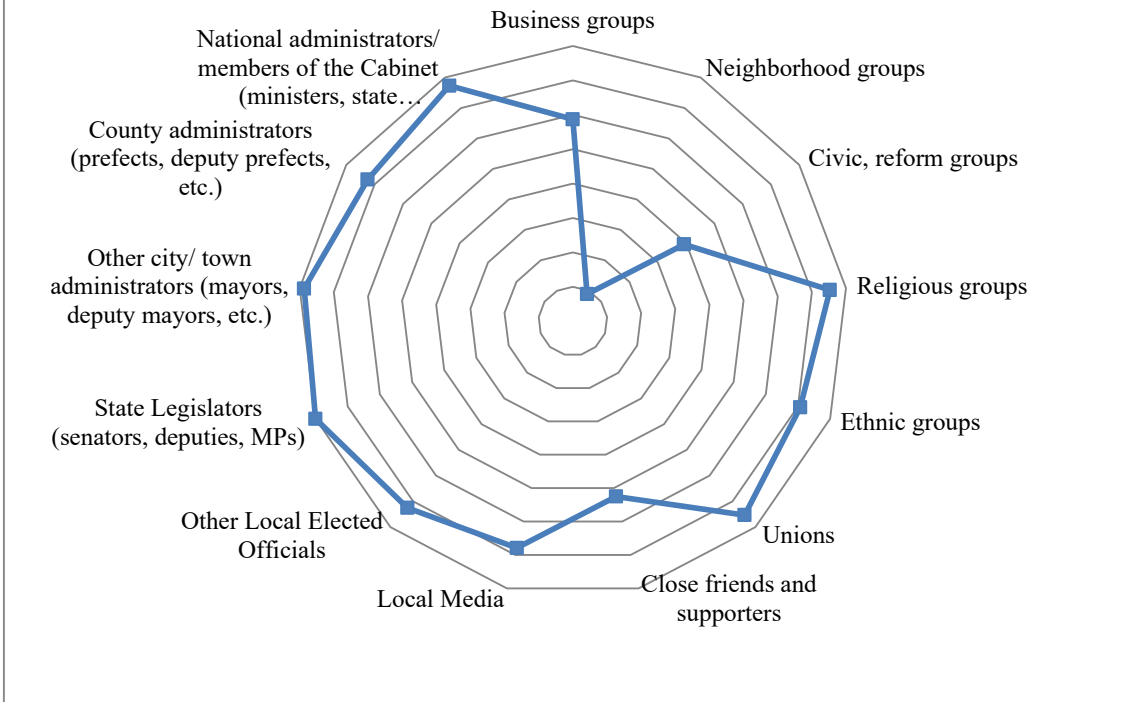
Česká Lípa



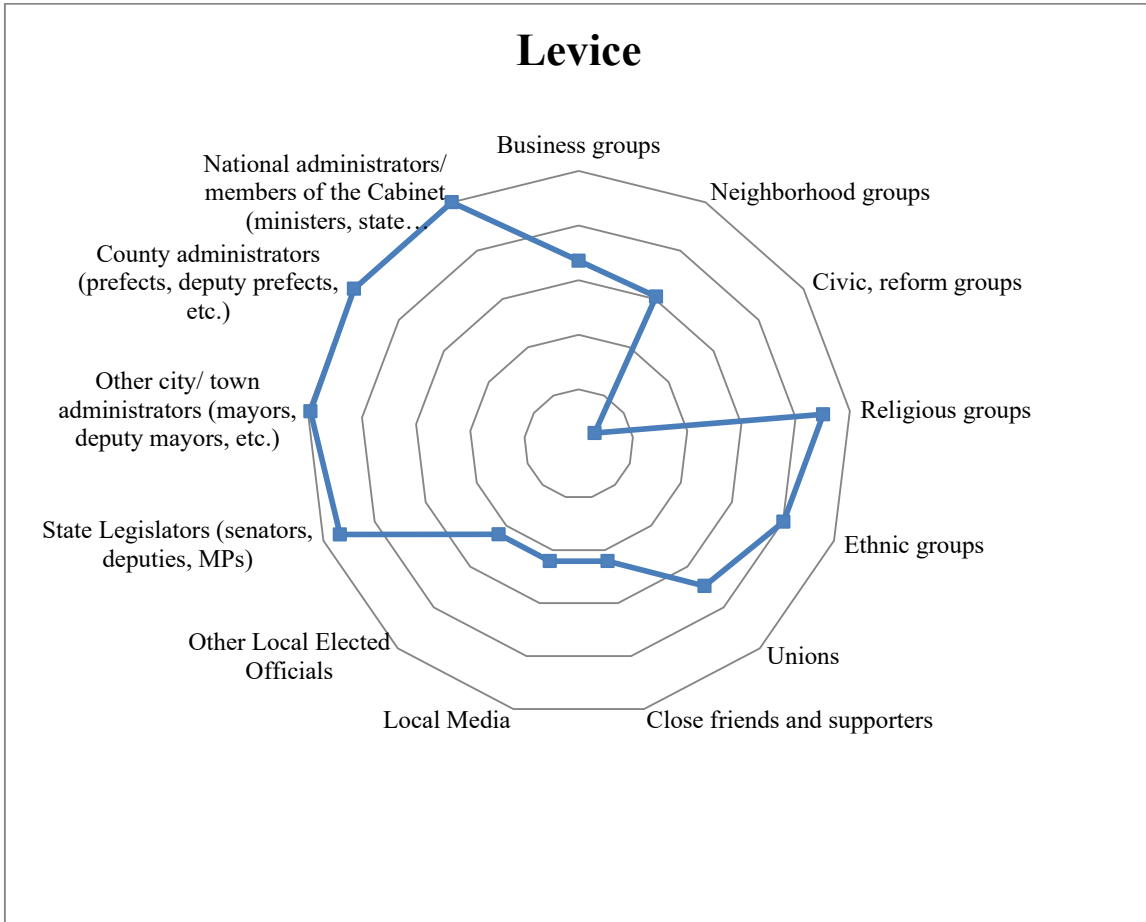
Targovishte

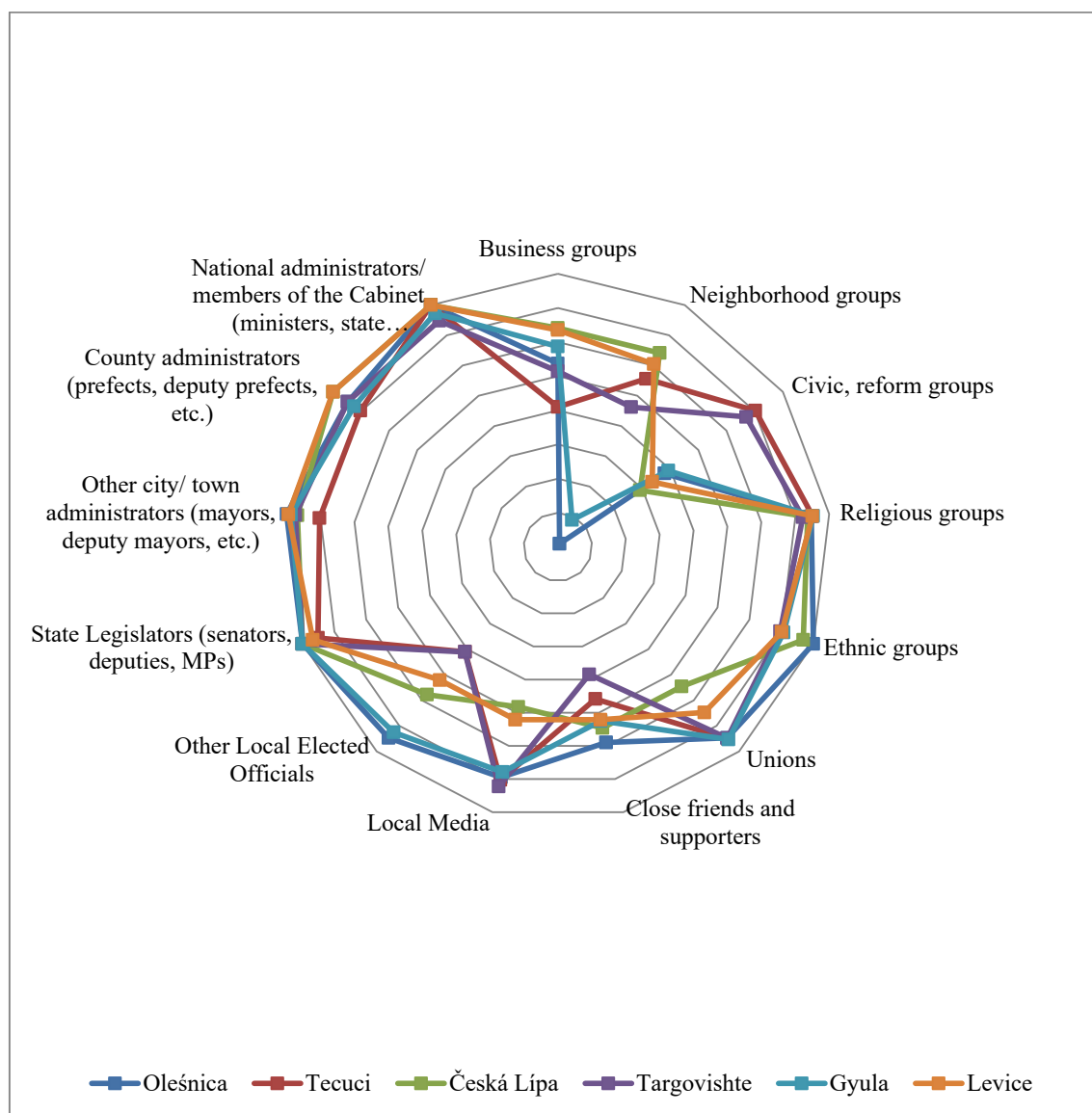


Gyula



Levice



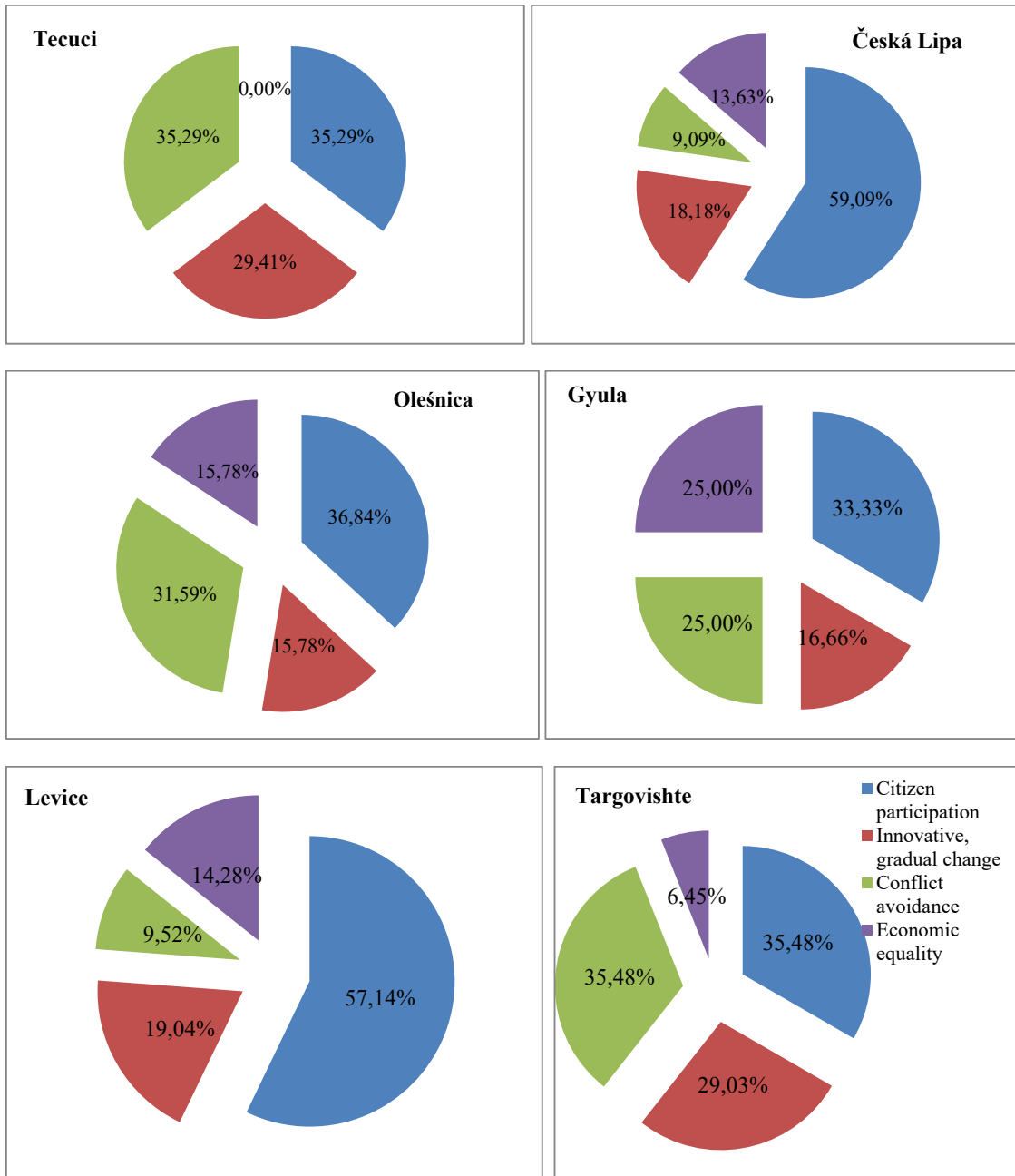


Graph 6.g Networks of local power (Note: the center is considered to represent the local political elite.) (Source: The construction of the networks was based on the results obtained through the administration of the questionnaire on the six groups of local/ municipal councilors.)

Q9: “Which of the following aspects do you value the most in a democracy ?”

	Tecuci		Česká Lípa		Olešnica		Gyula		Levice		Targovishte	
Citizen participation	6	35.29%	13	59.09%	7	36.84%	4	33.33%	12	57.14%	11	35.48%
Innovative, gradual change	5	29.41%	4	18.18%	3	15.78%	2	16.66%	4	19.04%	9	29.03%
Conflict avoidance	6	35.29%	2	9.09%	6	31.59%	3	25%	2	9.52%	11	35.48%
Economic equality	0	0%	3	13.63%	3	15.78%	3	25%	3	14.28%	0	0%

(total no. of answers: 17, 22, 19, 12, 21, and 31, respectively)



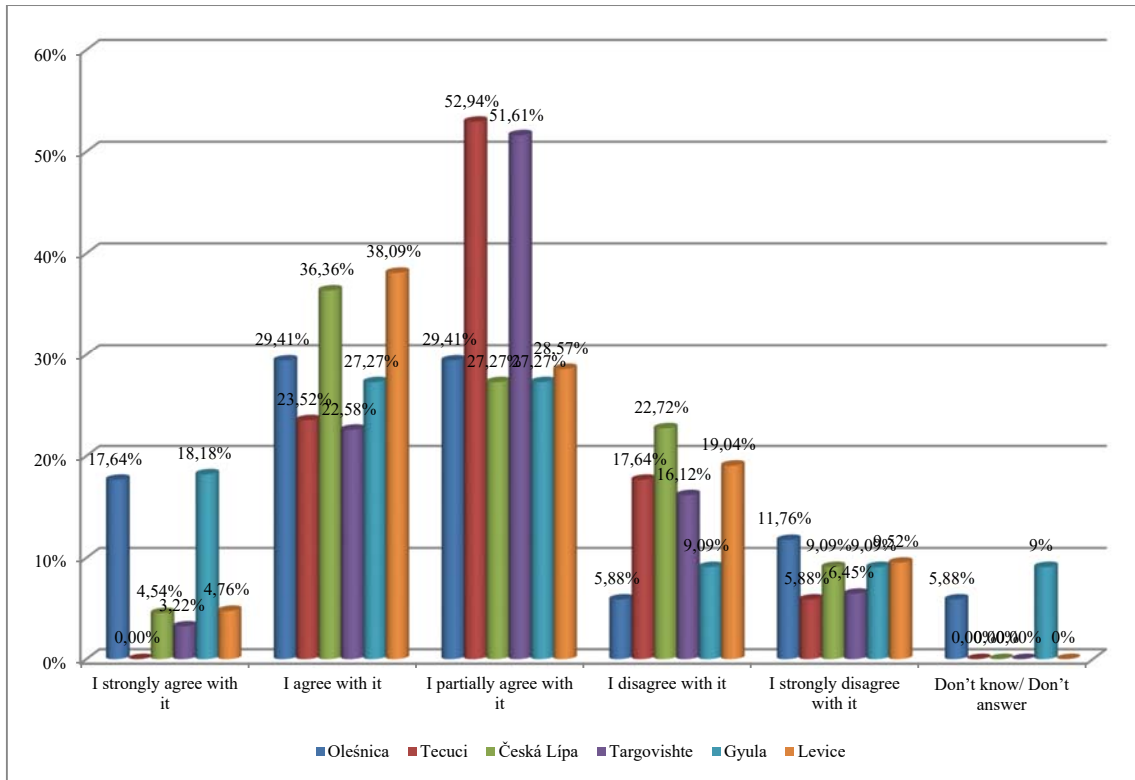
Graphs 7.a, 7.b, 7.c, 7.d., 7.e, 7.f Values orientation of the municipal councilors in Tecuci, Česká Lípa, Olešnica, Gyula, Levice, and Targovishte (Q9: “Which of the following characteristics do you value the most in a democracy?”)

Q10: “How do you perceive state intervention in economy ?”

	Tecuci		Česká Lípa		Olešnica		Gyula		Levice		Targovishte	
I strongly agree with it	0	0%	1	4.54%	3	17.64%	2	18.18%	1	4.76%	1	3.22%
I agree with it	4	23.52%	8	36.36%	5	29.41%	3	27.27%	8	38.09%	7	22.58%
I partially agree with it	9	52.94%	6	27.27%	5	29.41%	3	27.27%	6	28.57%	16	51.61%
I disagree with it	3	17.64%	5	22.72%	1	5.88%	1	9.09%	4	19.04%	5	16.12%

I strongly disagree with it	1	5.88%	2	9.09%	2	11.76%	1	9.09%	2	9.52%	2	6.45%
Don't know/ Don't answer	0	0%	0	0%	1	5.88%	1	9.09%	0	0%	0	0%

(total no. of answers: 17, 22, 17, 11, 21, and 31, respectively)

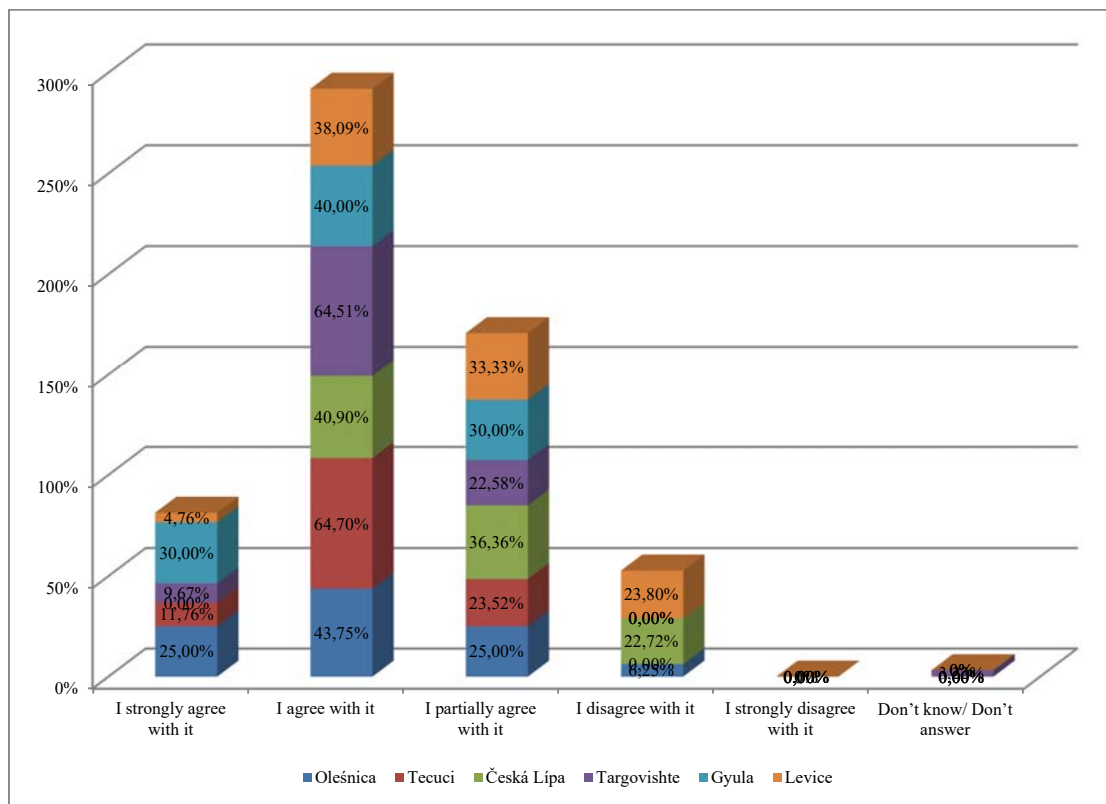


Graph 8 The attitudes of the local councilors in respect to the state intervention in economy (Q10: “How do you perceive state intervention in economy ?”) (Source: the results obtained through the administration of the questionnaire on the six groups of local/ municipal councilors.)

Q11: “What do you think about a larger local autonomy and decentralization, granted by the central authorities ?”

	Tecuci		Česká Lípa		Olešnica		Gyula		Levice		Targovishte	
I strongly agree with it	2	11.76%	0	0%	4	25%	3	30%	1	4.76%	3	9.67%
I agree with it	11	64.7%	9	40.9%	7	43.75%	4	40%	8	38.09%	20	64.51%
I partially agree with it	4	23.52%	8	36.36%	4	25%	3	30%	7	33.33%	7	22.58%
I disagree with it	0	0%	5	22.72%	1	6.25%	0	0%	5	23.8%	0	0%
I strongly disagree with it	0	0%	0	0%	0	0%	0	0%	0	0%	0	0%
Don't know/ Don't answer	0	0%	0	0%	0	0%	0	0%	0	0%	1	3.22%

(total no. of answers: 17, 22, 16, 10, 21, and 31, respectively)



Graph 9 The attitudes of the local councilors in respect to the prospects of increased decentralization (Q11: “How do you think about greater local autonomy and decentralization, granted by the central authorities?”) (Source: the results obtained through the administration of the questionnaire on the six groups of local/ municipal councilors.)

Aggregate table 1. The features of local leadership, according to its attitudes towards state intervention in economy and economic equality

		State intervention in economy	
		Acceptance	Rejection
Economic equality	Acceptance	Statists-egalitarianists	Anti-statists-egalitarianists
	Rejection	Statists-anti-egalitarianists	Anti-statists-anti-egalitarianists

Aggregate table 2. The features of local leadership, according to its attitude towards political conflict and citizen participation

		Political conflict	
		Acceptance	Avoidance
Citizen participation	Acceptance	Democrats	Populists
	Rejection	Pluralists	Authoritarianists

Q12: “In what direction do you think the town is heading ?”

	Tecuci	Česká Lípa	Olešnica	Gyula	Levice	Targovishte
--	--------	------------	----------	-------	--------	-------------

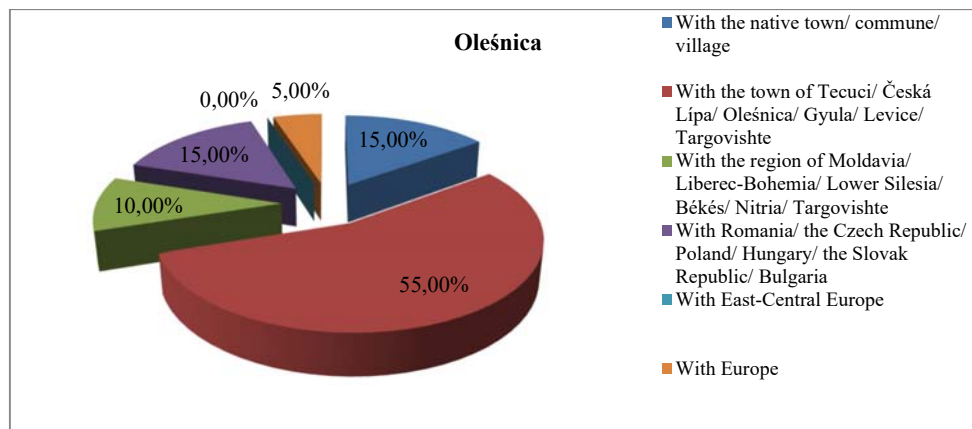
In a good direction	9	56.25%	4	18.18%	16	94.11%	10	90.90%	5	23.8%	17	56.66%
In a bad, wrong direction	3	18.75%	5	22.72%	0	0%	1	9.09%	4	19.04%	5	16.66%
There is no change	4	25%	13	59.09%	1	5.88%	0	0%	12	57.14%	8	26.66%

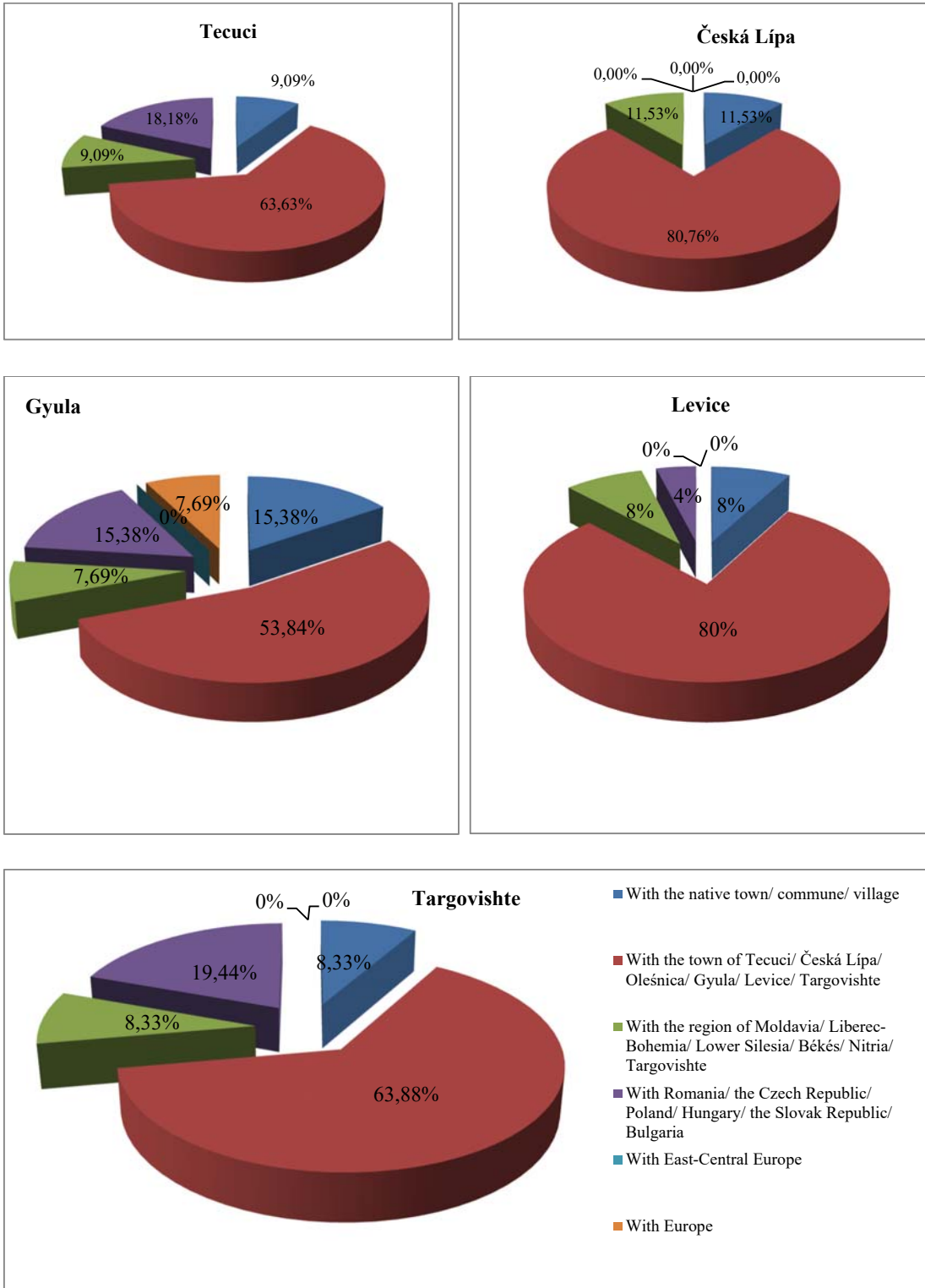
(total no. of answers: 16, 22, 17, 11, 21, and 30, respectively)

Q₁₃: “Which of the cultural and territorial entities do you identify yourself with firstly ?”

	Tecuci		Česká Lípa		Olešnica		Gyula		Levice		Targovishte	
With the native town/ commune/ village	2	9.09%	3	11.53%	3	15%	2	15.38%	2	8%	3	8.33%
With the town of Tecuci/ Česká Lípa/ Olešnica/ Gyula/ Levice/ Targovishte, respectively	14	63.63%	21	80.76%	10+1	55%	7	53.84%	20	80%	23	63.88%
With the region of Moldavia/ Liberec-Bohemia/ Lower Silesia/ Békés/ Nitria/ Targovishte, respectively	2	9.09%	1+2	11.53%	2	10%	1	7.69%	2	8%	3	8.33%
With Romania/ the Czech Republic/ Poland/ Hungary/ the Slovak Republic/ Bulgaria, respectively	4	18.18%	0	0%	3	15%	2	15.38%	1	4%	7	19.44%
With Central-Eastern Europe	0	0%	0	0%	0	0%	0	0%	0	0%	0	0%
With Europe	0	0%	0	0%	1	5%	1	7.69%	0	0%	0	0%

(total no. of answers: 22, 26, 20, 13, 25, and 36, respectively)





Graphs 10.a, 10.b, 10.c The cultural-geographical identification of the local elite (Q13: “Which of the cultural and territorial entities do you identify yourself with firstly?”) (Source: the results obtained through the administration of the questionnaire on the six groups of local/ municipal councilors.)

Q14: “What do you think is the major problem Tecuci/ Česká Lípa/ Olešnica/ Targovishte/ Levice/ Gyula confronts with currently ?” (open question: the first five most frequent answers were quantified)

	Tecuci		Česká Lípa		Olešnica		Gyula		Levice		Targovishte	
Unemployment (lack of job opportunities)	3	15.78%	7	26.92%	6	28.57%	4	28.57%	7	28%	5	15.15%
The lack of funds and investments	8	42.10%	6	23.07%	5	23.8%	3	21.42%	6	24%	14	42.42%
Economic crisis	0	0%	7	26.92%	1	4.76%	1	7.14%	3	12%	0	0%
Lack of modernization in infrastructure	1	5.26%	0	0%	0	0%	0	0%	0	0%	1	3.03%
The lack of social cohesion (social dialogue, social sensitivity)	2	10.52%	4	15.38%	0	0%	0	0%	4	16%	3	9.09%
The lack of perspectives	1	5.26%	0	0%	0	0%	0	0%	0	0%	1	3.03%
Problems in healthcare	0	0%	0	0%	1	4.76%	1	7.14%	0	0%	0	0%
Social exclusion	0	0%	0	0%	1	4.76%	1	7.14%	3	12%	0	0%
Populism	0	0%	0	0%	1	4.76%	0	0%	0	0	3	9.09%
Other problems	4	21.05%	2	7.69%	6	28.57%	4	28.57%	2	8%	6	18.18%

(total no. of answers: 19, 26, 21, 14, 25, and 33, respectively)

Q15: “How satisfied are you as an inhabitant of the town of Tecuci/ Česká Lípa/ Olešnica/ Gyula/ Levice/ Targovishte, respectively?”

	Tecuci		Česká Lípa		Olešnica		Gyula		Levice		Targovishte	
Very satisfied	0	0%	1	4.54%	8	47.05%	5	45.45%	1	4.76%	0	0%
Satisfied	10	58.82%	16	72.72%	8	47.05%	5	45.45%	15	71.42%	19	61.29%
Unsatisfied	5	29.41%	5	22.72%	1	5.88%	1	9.09%	5	23.8%	9	29.03%
Very unsatisfied	2	11.76%	0	0%	0	0%	0	0%	0	0%	3	9.67%

(total no. of answers: 17, 22, 17, 11, 21, and 31, respectively)

Q16: “What are the five most important qualities a local councilor should possess ?” (open question: the first five most frequent answers were quantified)

(total no. of answers: 75, 108, 72, 65, 107, and 89, respectively)

		Tecuci	Česká Lípa	Olešnica	Gyula	Levice	Targovishte					
<i>Ethical model</i>			22.65%	28.68%	23.59%	20%	25.23%	28.08%				
Correctness, honesty, fairness, truthfulness, integrity	11	14.66%	13	12.03%	11	15.27%	9	13.84%	12	11.21%	17	19.1%
Altruism, selflessness	1	1.33%	0	0%	4	5.55%	3	4.61%	0	0%	1	1.12%
Modesty	1	1.33%	2	1.85%			0	0%	1	0.93%	1	1.12%
High moral standards, verticality and seriousness, sobriety, personal discipline	4	5.33%	11	10.18%	2	2.77%	1	1.53%	10	9.34%	6	6.74%
Courage, bravery	0	0%	4	3.7%	0	0%	0	0%	3	2.80%	0	0%
Punctuality	0	0%	1	0.92%	0	0%	0	0%	1	0.93%	0	0%
<i>Technocratic model</i>			9.33%	21.29%	20.79%	16.92%		26.16%		11.23%		
Political experience, political will	4	5.33%	7	6.48%	1	1.38%	1	1.53%	6	5.6%	6	6.74%
Expertise and training	3	4%	5	4.62%	1	1.38%	1	1.53%	4	3.73%	4	4.49%
Reliability, solidity	0	0%	0	0%	4	5.55%	3	4.61%	0	0%	0	0%
Effectiveness, competence	0	0%	0	0%	2	2.77%	1	1.53%	10	9.34%	0	0%
Intelligence, wisdom	0	0%	7	6.48%	3	4.16%	2	3.07%	6	5.6%	0	0%
Patience or rapid reaction	0	0%	2	1.85%			0	0%	1	0.93%	0	0%
Enthusiasm, imagination, creativity, innovation	0	0%	2	1.85%	4	5.55%	3	4.61%	1	0.93%	0	0%
<i>Pragmatic model</i>			21.33%	27.77%	48.56%	53.84%		30.84%		30.33%		
Dedication to the town's improvement plans, devotion, respect for the community, desire to change	9	12%	9	8.33%	0	0%	3	4.61%	8	7.47%	14	15.73%
Involvement, diligence, commitment, assertiveness, industry	0	0%	0	0%	5	6.94%	4	6.15%	0	0%	0	0%
Determent, consistency, consequence	0	0%	0	0%	2	2.77%	1	1.53%	0	0%	0	0%
Thoroughness	0	0%	0	0%	1	1.38%	1	1.53%	0	0%	0	0%
The capacity to identify development opportunities for the town (vision, perspective)	5	6.66%	11	10.18%	1	1.38%	1	1.53%	10	9.34%	7	7.86%
Initiative, enactment	1	1.33%	2	1.85%	1	1.38%	1	1.53%	1	0.93%	1	1.12%
Persuasion skills, capacity to compromise, cooperate, and negotiate, dialogue-oriented, non-conflictual	1	1.33%	8	7.4%	6	8.33%	5	7.69%	7	6.54%	1	1.12%
Intuition	0	0%	1	0.92%	0	0%	0	0%	1	0.93%	0	0%
Openness to others, tolerance, broadmindedness	0	0%			7	9.72%	6	9.23%	0	0%	0	0%
Social sensitivity, social activity, care for the citizen, social justice spirit, and social-problems awareness	0	0%	4	3.7%	8	11.11%	7	10.76%	3	2.8%	0	0%
Economic independence	0	0%	2	1.85%	0	0%	0	0%	1	0.93%	4	4.49%
Leadership skills	0	0%	3	2.77%	0	0%	3	4.61%	2	1.86%	0	0%
Accountability, responsiveness	0	0%	0	0%	4	5.55%	3	4.61%	0	0%	0	0%

<i>Political model</i>		24%		12.96%		6.91%		9.19%		17.75%		30.33%
Oratorical skills	1	1.33%	1	0.92%	0	0%	0	0%	1	0.93%	1	1.12%
Political loyalty	2	2.66%	2	1.85%	1	1.38%	1	1.53%	1	0.93%	3	3.37%
Incorruptibility	4	5.33%	5	4.62%	0	0%	2	3.07%	4	3.73%	6	6.74%
Interest detachment (objectivity)	2	2.66%	3	2.77%	2	2.77%	1	1.53%	2	1.86%	3	3.37%
Collegiality, team spirit	9	12%	3	2.77%	1	1.38%	1	1.53%	2	1.86%	14	15.73%
Political independence	0	0%	0	0%	1	1.38%	1	1.53%	9	8.41%	0	0%
<i>Gender model</i>	0	0%	0	0%	0	0%	0	0%	0	0%	0	0%

Annexes No. 6. Patterns of recruitment

6.1. Incumbency in the Local Council of Tecuci, in the Municipal Councils in Česká Lípa, Olešnica, and Levice

Name	Mandate
Chivu Neculai (PSD)	2000-2004
Cristea Daniela (PSD)	2004-2008
Diaconu Vasile (PNL)	2004-2008
Florea Costică (PD-L)	2004-2008
Ionescu Gabriel (PD-L)	2004-2008
Papuc Petru (PNL)	2004-2008
Paraschiv Elena (PD-L)	2004-2008
Tiron Viorica (PNL)	2004-2008

(The list of local councilors who are at their second mandate)

Name	Mandate
Karel Bubeník (ČDDS)	2 nd mandate
Miroslav Hudec (SZ)	4 th mandate
Jana Jansová Kolousová (ODS)	2 nd mandate
Anna Kobosilová (TOP 09)	2 nd mandate
Jiří Kočandrle (TOP 09)	4 th mandate
Antonín Lačný (VV)	2 nd mandate
Jana Rychtaříková (ČSSD)	2 nd mandate
Eva Stehlíková (ODS)	2 nd mandate
Jaromír Štrumfa (ČSSD)	4 th mandate
Karel Tejnora (ODS)	2 nd mandate
Jaroslav Ulbrich (ČSSD)	3 rd mandate
Jana Zejdová (KSČM)	2 nd mandate

Name	Mandate
Juraj Braun	2 nd mandate
Peter Drábik	3 rd mandate
Gabriel Földi	3 rd mandate
Ján Krtík	2 nd mandate
Štefan Kalocsay	2 nd mandate
Gabriel Mančík	2 nd mandate
Ján Medovarský	2 nd mandate
Richard Strákoš	3 rd mandate
Erika Sulinová	3 rd mandate
Igor Varga	4 th mandate
L'ubica Burdová	2 nd mandate
Ján Janáč	2 nd mandate
Ján Koštrna	2 nd mandate
Ivan Murín	2 nd mandate
Anton Očenáš	3 rd mandate
Roman Salinka	4 th mandate
Marcel Zamboj	2 nd mandate

Name	Mandate
Tadeusz Żółkiewski	2 nd mandate
Wiesław Piechówka	4 th mandate
Damian Siedlecki	2 nd mandate
Paweł Bielański	3 rd mandate
Wojciech Bartnik	5 th mandate
Beata Krzesińska	3 rd mandate
Józef Stojanowski	2 nd mandate
Wojciech Brym	2 nd mandate
Jacek Malczewski	2 nd mandate
Grażyna Siednienko	2 nd mandate
Zbigniew Nagórny	3 rd mandate
Grzegorz Żyła	2 nd mandate

6.2. The occupational status of the members of the members of the Local Council in Tecuci, of the Municipal Councils in Česká Lípa and Olešnica

	Engineer	Teacher	Jurist	Physician	Mechanic	Welder
PD-L	4 – 50%	2 – 25%	2 – 25%	0 – 0%	0 – 0%	0 – 0%
PSD	2 – 50%	1 – 25%	0 – 0%	1 – 25%	0 – 0%	0 – 0%
PNL	3 – 75%	1 – 25%	0 – 0%	0 – 0%	0 – 0%	0 – 0%
The Green Party	0 – 0%	0 – 0%	1 – 33.3%	0 – 0%	1 – 33.3%	1 – 33.3%

	Engineer	Teacher	Jurist	Physician	Electrician	Psychologist	Architect	Musician	IT Expert
ČSSD	3 – 43.85%	2 – 28.57%	1 – 14.28%						1 – 14.28%
ODS	3 – 60%			2 – 40%					
TOP 09	2 – 66.66%						1 – 33.33%		
VV	2 – 66.66%			1 – 33.33%					
KSČM			2 – 66.66%		1 – 33.33%				
SLK	1 – 50%							1 – 50%	
SZ						1 – 100%			
“Suverenita, blok Jana Bobošíková”		1 – 100%							

	Engineer	Teacher	Jurist	Physician	Architect	Artist
PO						
PiS						
SLD		1 – 100%				
Non-affiliated/Independent						1 – 100%

6.3. The average age of the members of the members of the Local Council in Tecuci, of the Municipal Councils in Česká Lípa and Olešnica, according to their party affiliation

	The average age of the local councilors
PD-L	54
PSD	54
PNL	53.75
The Green Party	46.33

	The average age of the local councilors
ČSSD	49.42
ODS	50.8
TOP 09	43
VV	49.66
KSČM	50.33
SLK	29
SZ	60
“Suverenita, blok Jana Bobošíková”	34

	The average age of the municipal councilors
PO	45.66
PiS	49
SLD	56
Independent/ non-affiliated	53.5

7. Number of interventions per meeting of each local councilor (calculated in six meetings) for the Local Council in Tecuci

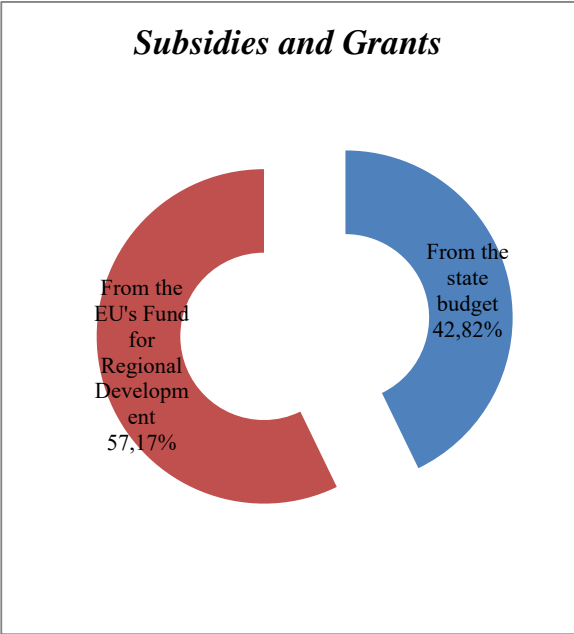
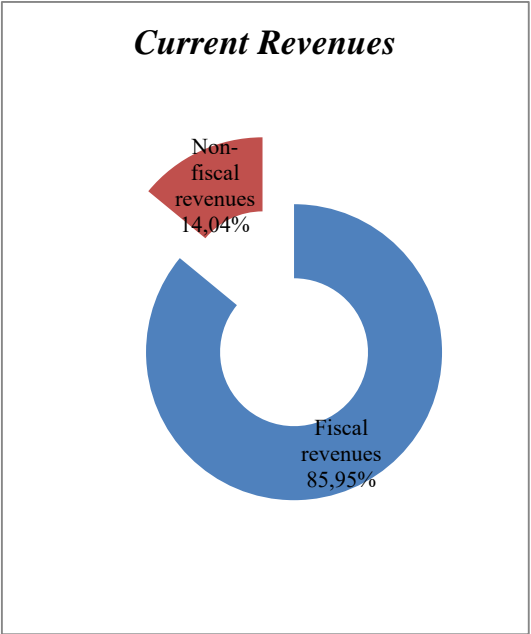
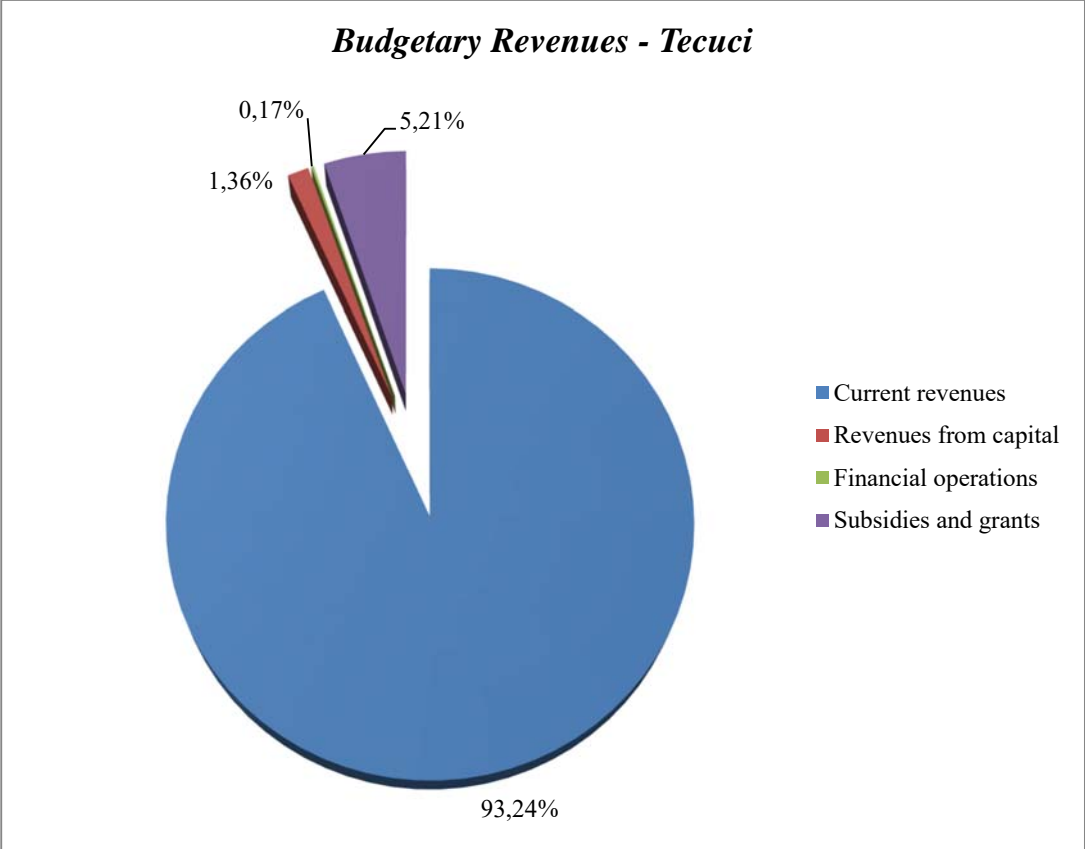
Local councilor	Number of interventions/ meeting of the Local Council	Number of absences
Basalic Cristinel	5	-
Bălănică Traian	5	-
Butunoi Liviu	4	2
Chivu Neculai	11	-
Cristea Daniela	3	-
Coman Valentin	3	-
Diaconu Vasile	10	-
Dănăilă Vasile	6	1
Dimitriu Doina	3	-
Florea Costică	7	-
Ionescu Gabriel	9	-
Manoliu Codruț	5	-
Negru Teodor	4	1
Papuc Petru	11	-
Paraschiv Elena	2	-
Scorța Mihai	4	-
Tiron Viorica	1	-

Tudor Luciano	5	-
Vasiliu Florin	5	-

Annexes No. 8. The Budget of the Local Administration of Tecuci and Česká Lípa, respectively

8.1. Revenues in 2010 in Tecuci (*Graphs 11.a, 11.b, 11.c*)

REVENUES – TOTAL	66,084	100%
I. CURRENT REVENUES	61,619	93.24%
A. FISCAL (TAX) REVENUES	52,962	85.95% (80.14% from the total)
A.1. TAXES ON INCOME, PROFITS AND CAPITAL GAINS	11,132	21.01% (16.84% from the total)
A.2. TAXES ON SALARIES	0	0% (0% from the total)
A.3. TAXES ON PROPERTY	7,577	14.30% (11.46% from the total)
A.4. TAXES ON GOODS AND SERVICES	34,253	64.67% (51.83% from the total)
A.5. OTHER FISCAL TAXES	0	0% (0% from the total)
B. NON-FISCAL REVENUES	8,657	14.04% (13.09% from the total)
B.1. REVENUES FROM PROPERTY	2,162	24.97% (3.27% from the total)
B.2. REVENUES FROM THE DISPOSAL OF GOODS AND SERVICES	6,495	75.02% (9.82% from the total)
II. REVENUES FROM CAPITAL (from the capitalization of goods, from the disposal of state-owned houses, from the disposal of goods belonging to the private domain of the state, etc.)	900	1.36%
III. FINANCIAL OPERATIONS (cashing in reimbursements of the granted loans)	116	0.17%
IV. SUBSIDIES AND GRANTS	3,449	5.21%
IV.1. FROM THE STATE BUDGET	1,477	42.82% (2.23% from the total)
IV.2. FROM THE EU'S FUND FOR REGIONAL DEVELOPMENT	1,972	57.17% (2.98% from the total)



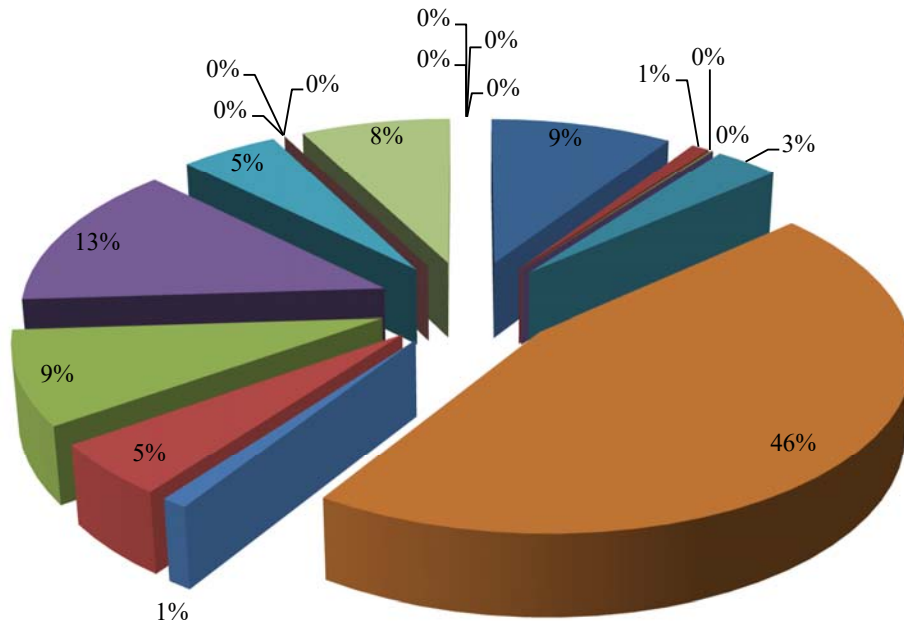
8.2. Expenditures in 2010 in Tecuci (*Graph 12*)

EXPENDITURES	66,084
Public authorities and external actions	6,097 – 9.22%
Other general public services	610 – 0.92%

Transfers of general character between the different administrative levels	73 – 0.11%
Defense	0 – 0%
Public order and national security	2,171 – 3.28%
Education	30,117 – 45.57%
Healthcare	685 – 1.03%
Culture, recreation, religion	3,334 – 5.04%
Social Insurance and Assistance	5,800 – 8.77%
Housing, services and public development	8,887 – 13.44%
Environment	3,300 – 4.99%
General economic, commercial and work actions	0 – 0%
Fuels and energy	0 – 0%
Agriculture, sylviculture, pisciculture, hunting	0 – 0%
Transportation	5,010 – 7.58%
Other economic actions	0 – 0%
Reserves	0 – 0%
Redundancy and surplus	0 – 0%
Deficit	0 – 0%

(The numbers are expressed in thousands of lei.)

Budgetary Expenditure - Tecuci



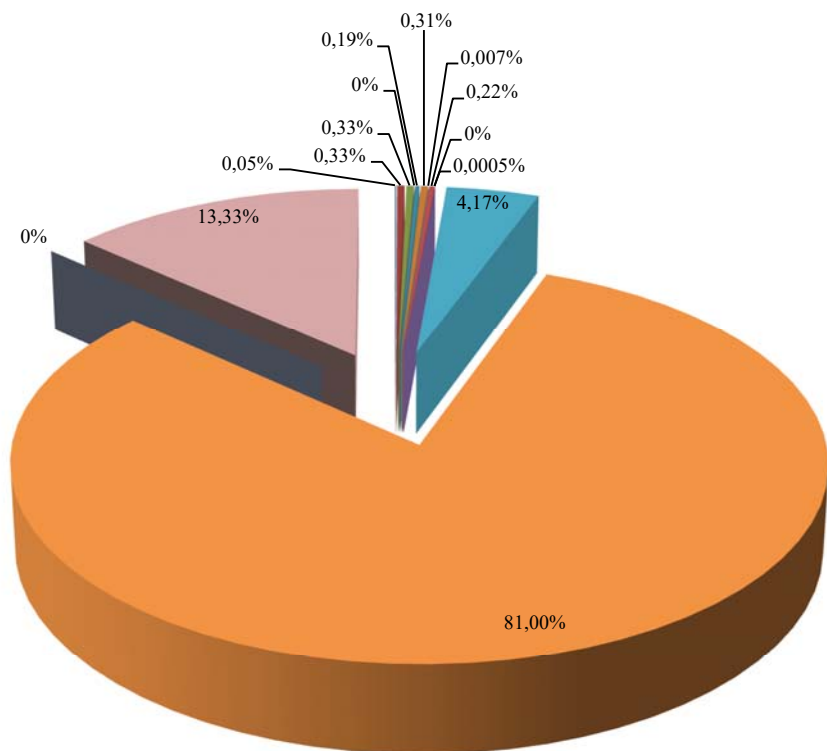
- Public authorities and external actions
- Other general public services
- Transfers of general character between administrative levels
- Defense
- Public order and national security
- Education
- Healthcare
- Culture, recreation, religion
- Social Insurance and Assistance
- Housing, services and public development
- Environment
- General economic, commercial and work actions
- Fuels and energy
- Agriculture, sylviculture, pisciculture, hunting
- Transportation
- Other economic actions
- Reserves
- Redundancy
- Deficit

8.3. Revenues in 2010 in Česká Lípa (*Graph 13*)

REVENUES – TOTAL	683,673	100%
ENVIRONMENT	465	0.06%
TRANSPORTATION	2,650	0.38%
EDUCATION	2,650	0.38%
TOWN'S INFORMATION CENTER	0	0%
CULTURE	1,570	0.22%
SPORT	2,480	0.36%
CHANCELLERY DEPARTMENT AND OFFICE OF THE SECRETARY	60	0.008%
MUNICIPAL POLICE	1,780	0.26%
PAYROLLS AND WAGES	0	0%
DEPARTMENT OF SOCIAL AFFAIRS AND HEALTH	4	0.0005%
DEVELOPMENT DEPARTMENT: PUBLIC PROPERTY AND ASSETS, INVESTMENTS, LAND USE AND SUBSIDIES	32,941	4.81%
GENERAL CASH ADMINISTRATION – MUNICIPAL TAXES	639,067	93.47%
DIRECT INVESTMENTS	0	0%
SUPPLIMENTARY FUNDING	105,216	15.38%
A. POSITIVE FUNDING		
A.1. THE USE OF INTEREST LOANS		
Loan Repayment (to BD Lada, Constructions Firm)	12,316	11.7%
Loan Repayment (to Sportareál, Sports' Center)	15,863	15.07%
A.2. THE USE OF INVESTMENTS		
ZUŠ – Façade and Window Replacement	14,500	13.78%
Location Investments and Wheels	37,000	35.16%
CAS Fire Trucks (deductible from the subsidy)	13,000	12.35%
Partnership with “rek.křiž. Českokamenická-Roháče z Dubé”	18,000	17.1%
Reimbursement from “MAD Žitavská-Východní”, Eastern Private Company	3,400	3.23%
Reconstruction and Completion of Special Schools, by “ZŠ”, Southern Private Company	7,000	6.65%
B. NEGATIVE FUNDING		
Principal loan repayment (to Sportareál)	- 15,863	- 15.07%

(The numbers express the values in thousands of korunas.)

Budgetary Revenues - Česká Lípa

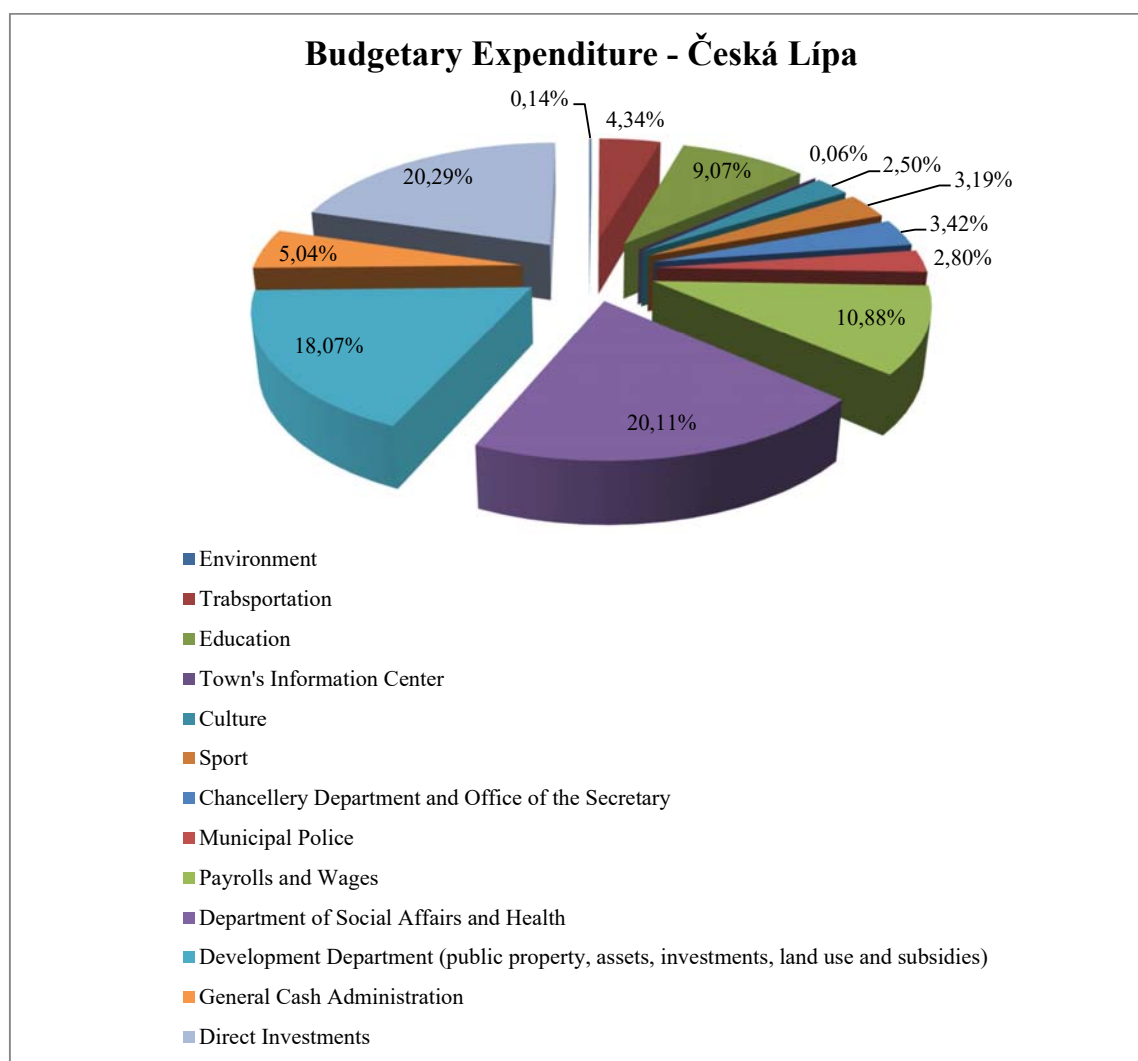


- Environment
- Transportation
- Education
- Town's Information Center
- Culture
- Sport
- Chancellery Department and Office of the Secretary
- Municipal Police
- Payrolls and Wages
- Department of Social Affairs and Health
- Development Department (public property, assets, investments, land use and subsidies)
- General Cash Administration - Municipal Taxes
- Direct Investments
- Supplimentary Funding

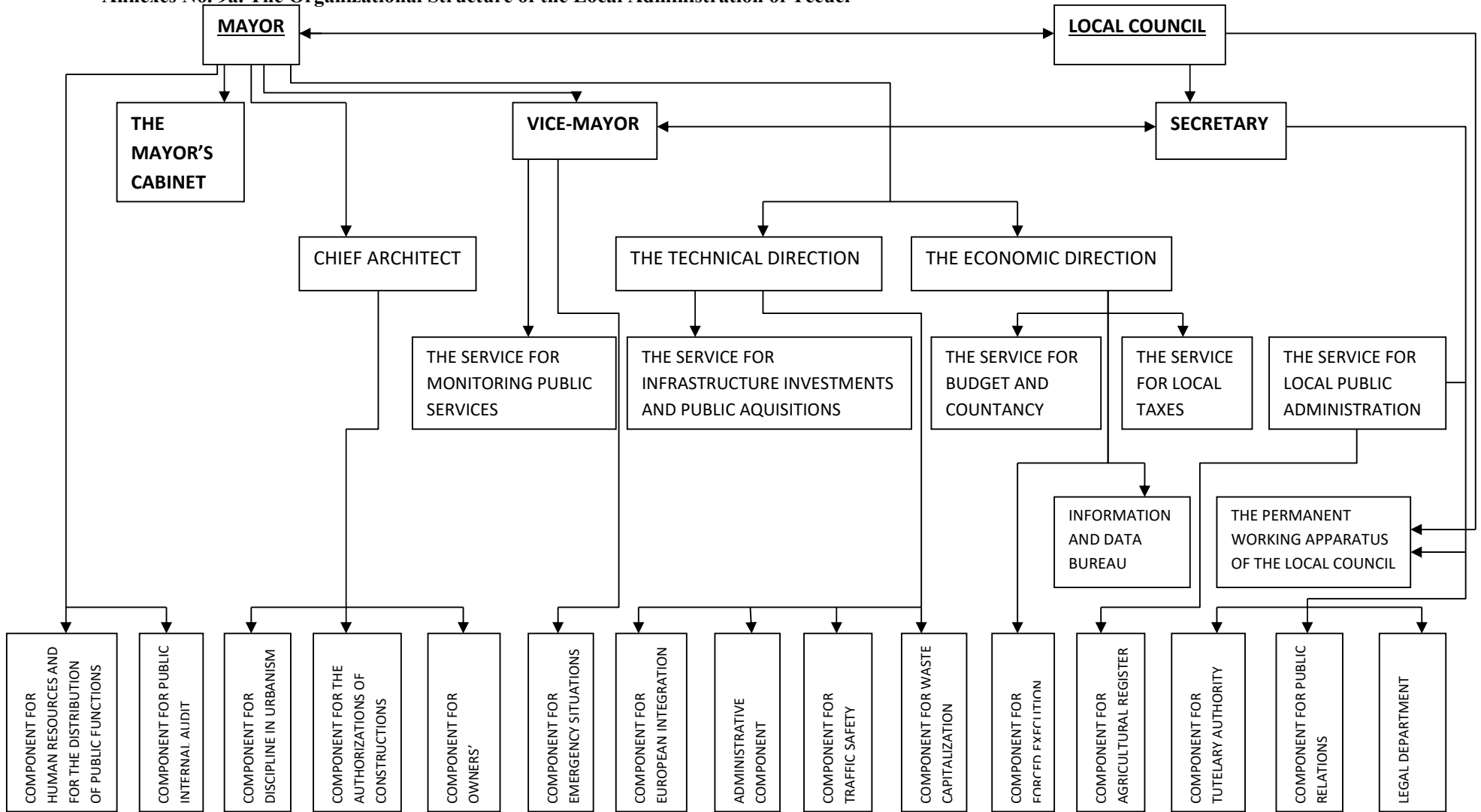
8.4. Expenditures in 2010 in Česká Lípa (*Graph 14*)

EXPENDITURES – Total	788,889	100%
Environment	1,150	0.14%
Transportation	34,300	4.34%
Education	71,625	9.07%
Town's Information Center	550	0.06%
Culture	19,781	2.50%
Sport	25,236	3.19%
Chancellery Department and Office of the Secretary	27,049	3.42%
Municipal Police	22,149	2.80%
Payrolls and Wages	85,881	10.88%
Department of Social Affairs and Health	158,649	20.11%
Development Department: Public Property and Assets, Investments, Land Use and Subsidies	142,574	18.07%
General Cash Administration	39,775	5.04%
Direct Investments	160,100	20.29%

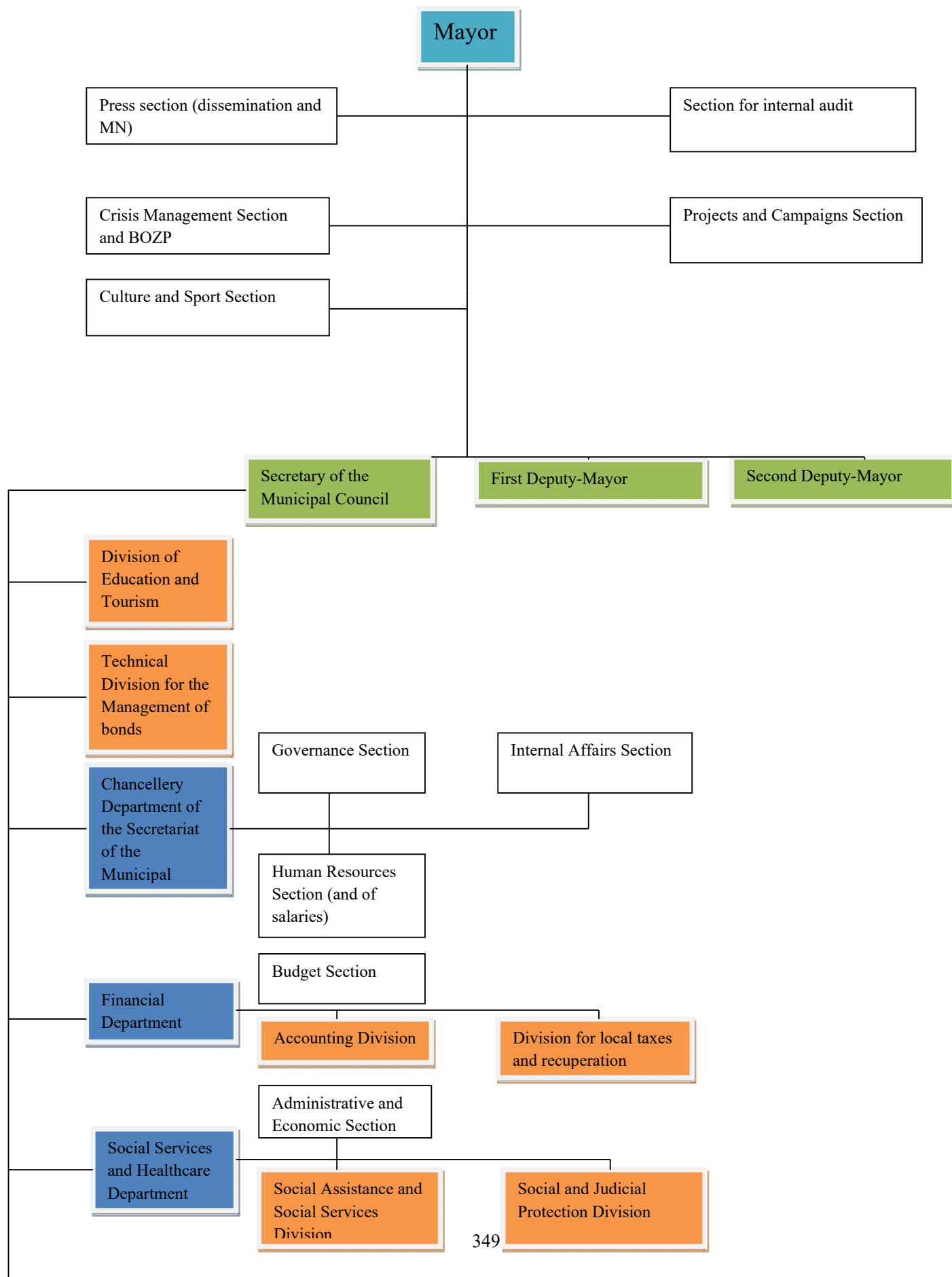
(The numbers express the sums in thousands of korunas.)

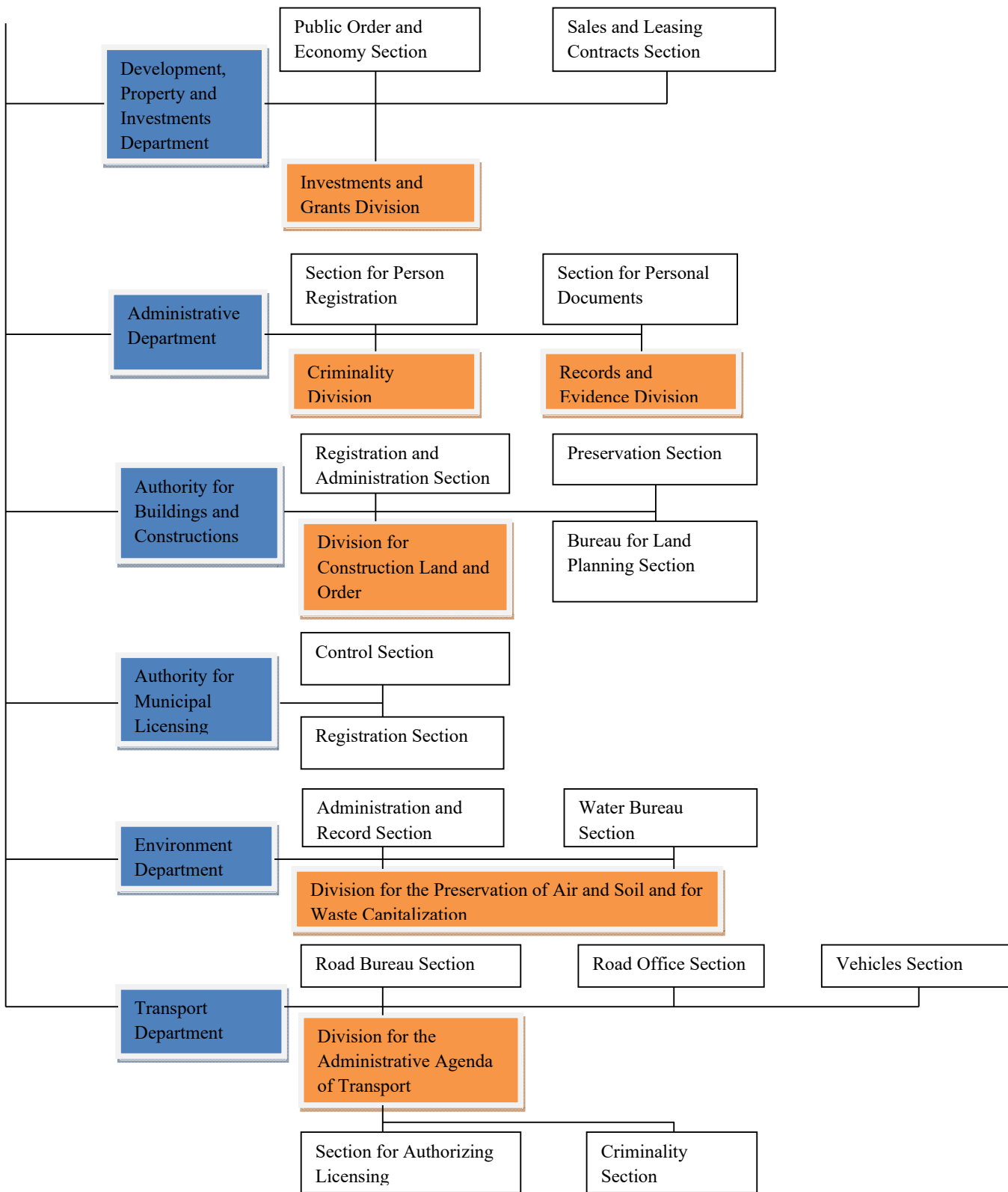


Annexes No. 9a. The Organizational Structure of the Local Administration of Tecuci



Annexes No. 9b. Organizational scheme of the Administration of Česká Lípa





Annexes No. 10. The model of the applied questionnaire



University of Bucharest, Political Science Department
St. Stefan Street, no. 24, Bucharest
Roxana Marin
Tel.: + 40(0) 761462441
E-mail: ana_rocks_m5@yahoo.com, marin.roxana@fspub.unibuc.ro
Friday, 2nd of September 2011

Tecuci, September 2011

Dear Madam, Dear Sir,

I am a first-year MA student of the Political Science Department, at the University of Bucharest, Romania, enrolled in the MA programme of “Comparative Politics” and I am conducting a **research project** titled “*A Comprehensive Inquiry into the Local Political Elites of East-Central Europe. A Comparative Approach of Tecuci (Romania) and Česká Lípa (the Czech Republic)*”. As I am planning two case studies on the topic of local elite, I have chosen to study the Municipal (Local) Councils of the two towns: the first is my native town, the second, Česká Lípa, is similar to the former, but it is definitely a more successful case of local leadership. The research is intended as my final paper for the MA dissertation.

As a consequence, I kindly invite you to participate to this research project on the local political elites, by filling in the following questionnaire. This questionnaire was administered also to the members of the Local Council of Tecuci and it represents one of the main research methods that the research I am conducting employs. The time for the filling in the questionnaire below is of approximately 5 to 10 minutes. In most cases, you will have to check only one answer. For the questions nos. **4, 5, 6, 7, 8**, you can choose more than one answer, but no more than three. Questions nos. 14 and 16 are open-ended questions which will need from you a personalized answer.

I would like to remind you that the option to answer the questionnaire is totally voluntary. Also, if you prefer not to answer a specific question, you will have the complete liberty to do so. What is also important is the fact that all information provided by your answers is confidential, bearing exclusively a purely didactical, academic scope. The questionnaire has an anonymous character.

The administration of the present questionnaire was made possible through Misses Hana Moudrá’s agreement and support, Mayor of Česká Lípa¹. I would like to remind you that this questionnaire has **a voluntary and anonymous character and an academic scope**.

I would like to thank you very much for your patience in filling in the questionnaire and for your cooperation to this research project. I appreciate the time, the attention and the effort you put in filling in the attached questionnaire. I am deeply grateful.

With much appreciation and consideration,

Roxana Marin, MA student in “Comparative Politics”,
Political Science Department, University of Bucharest, Romania

¹ To be obtained via e-mail, through written accord.



1. In your case, what is the major motivation for becoming involved in politics ?

- a. Politics is my way of life
- b. Loyalty towards the doctrine of a certain party
- c. To establish social friendships and contacts
- d. The very fun and excitement of politics
- e. To build a personal career in politics
- f. Desire to influence the politics of government
- g. Desire to be close to influential people
- h. The very feeling of obligation towards the community
- i. The belief involvement in politics will help with business contacts
- j. Desire for recognition in the community

2. In your case, what is the major motivation for wanting to become a municipal councillor ?

- a. Politics is my way of life
- b. Loyalty towards the doctrine of a certain party
- c. To establish social friendships and contacts
- d. The very fun and excitement of politics
- e. To build a personal career in politics
- f. Desire to influence the politics of government
- g. Desire to be close to influential people
- h. The very feeling of obligation towards the community
- i. The belief involvement in politics will help with business contacts
- j. Desire for recognition in the community

3. Would you run for another mandate of municipal councillor ?

- a. Yes
- b. No
- c. Don't know/ Don't answer

4. To which of the fields below do you consider a special attention should be given ?

- a. Public (infrastructural) improvements
- b. Education
- c. Healthcare
- d. Public safety
- e. Housing
- f. Unemployment
- g. Social services
- h. Economic development
- i. Pollution
- j. Minorities' rights and interethnic relations
- k. Recreation and culture

5. In which of the fields below do you consider significant measures can be taken at the local level (that sufficient political power exists at the local level for operating beneficial changes) ?

- a. Public (infrastructural) improvements
- b. Education
- c. Healthcare
- d. Public safety



- e. Housing
- f. Unemployment
- g. Social services
- h. Economic development
- i. Pollution
- j. Minorities' rights and interethnic relations
- k. Recreation and culture

6. In which of the fields below do you consider efficient and beneficial measures had been already taken in your town during the last years ?

- a. Public (infrastructural) improvements
- b. Education
- c. Healthcare
- d. Public safety
- e. Housing
- f. Unemployment
- g. Social services
- h. Economic development
- i. Pollution
- j. Minorities' rights and interethnic relations
- k. Recreation and culture

7. On which of the fields below do you consider you are able to exercise a personal influence in taking effective measures ?

- a. Public (infrastructural) improvements
- b. Education
- c. Healthcare
- d. Public safety
- e. Housing
- f. Unemployment
- g. Social services
- h. Economic development
- i. Pollution
- j. Minorities' rights and interethnic relations
- k. Recreation and culture

8. To which of the following groups do you have the most numerous contacts/ interactions ?

- a. Business groups
- b. Neighborhood groups
- c. Civic, reform groups
- d. Religious groups
- e. Ethnic groups
- f. Trade unions
- g. Close friends and supporters
- h. Local media
- i. Other local elected officials
- j. State legislators (senators, deputies, MPs)
- k. Other city/ town administrators (mayors, vice-mayors)
- l. County/ regional administrators (regional chief executive officers, vice-chiefs)



m. National administrators/ members of the Cabinet (ministers, state secretaries)

9. Which of the following aspects do you value the most in a democracy ?

- a. Citizen participation
- b. Innovative, gradual change
- c. Conflict avoidance
- d. Economic equality

10. How do you perceive state intervention in economy ?

- a. I strongly agree with it
- b. I agree with it
- c. I partially agree with it
- d. I disagree with it
- e. I strongly disagree with it
- f. Don't know/ Don't answer

11. What do you think about greater local autonomy and decentralization, granted by the central authorities ?

- a. I strongly agree with it
- b. I agree with it
- c. I partially agree with it
- d. I disagree with it
- e. I strongly disagree with it
- f. Don't know/ Don't answer

12. In what direction do you think the town is heading ?

- a. In a good direction
- b. In a bad direction
- c. There is no change

13. Which of the following territorial and cultural entities would you first identify with ?

- a. The native place (town, commune, village, other municipality)
- b. The town of Česká Lípa
- c. The region of Liberec
- d. Bohemia
- e. The Czech Republic
- f. Central Europe
- g. Europe

14. What do you think is the major problem Česká Lípa confronts with presently ?

15. How satisfied are you of living in Česká Lípa ?

- a. Very satisfied
- b. Satisfied
- c. Unsatisfied



d. Very unsatisfied

16. What are the first five most important qualities a municipal councillor should possess ?

Information about the respondents:

Age:

Gender:

Nationality:

Party affiliation:

Occupation:

Religion:

Married / Unmarried / Divorced / Widow / Don't know – Don't answer

The field of university studies in which you were trained: law / humanities / social science / technology and hard sciences / no university education / other field

Any / No relatives in politics or government

Father was a member of: the lower class (with an average level of education) / the middle class (with high school or university studies) / the upper class (with university studies)

Incumbent as municipal councilor with: One mandate/ Two mandates/ Three mandates/ More than three mandates